

The Belleville Times

News

52ND YEAR, NO. 47

Second Class Postage
Paid at Newburg, N. J.

BELLEVILLE, N. J., TUESDAY, NOVEMBER 20, 1962

Telephone PLymouth 9-3200

10¢ Per Copy

Sommers Wanted Laterza, Strumolo, Addonizio To Call Off The Investigation Of Revenue-Finance Department In Exchange For Job Security To Ralph Risoli

AN EDITORIAL:

One For The Finance Department Probers

We have a public admission that auditors, terminated by the Town Council on August 31 "are still bringing tax lists up to date, in line with their contract," with the knowledge and consent of Town Manager William A. Sommers.

We have been made to understand the reference to the tax lists involves work on books and records for years 1961, 1960 and prior. The question arising in our mind is this — were payments made to the auditors in 1960 and 1961 for services they are performing this September, October and November at a cost variously estimated between \$600 to \$1,000 per week?

The taxpayers of Belleville have a right to know the facts relating to the above. Mr. Sommers, our Town Manager, has stated that the cost of the services for the auditors working on the town records during September, October and November "will not cost one cent." If the services will cost us nothing in the future were they illegally paid for in the past?

Did the Town of Belleville in 1960 and 1961 pay for services not rendered?

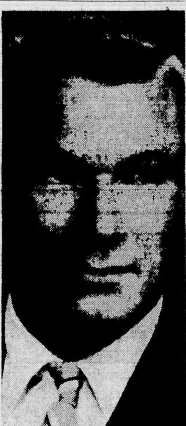
Dinner To Honor Mrs. Cora Smith

"Aunt Cora" means mother, home, and security to some 68 homeless children who have been sheltered under her roof at 321 Stephens Street, Belleville over the past 40 years.

Some were blind, some crippled, some illegitimate, and all were in need of the help and understanding which "Aunt Cora" gave them in abundance.

Monday, December 3, Mrs. Cora Elizabeth Smith — better known to her many friends and tiny charges as "Aunt Cora" — will receive recognition for the years of maternal care she has given the children.

She will be guest of honor at a testimonial dinner at Branch Brook Manor. Attending will be Mayor Robert M. Laterza, John W. F. Young, president of Federal Industries, and Theodore Wells, Toastmaster will be Deputy Mayor G. George Addonizio, as well as many friends and acquaintances. Time for the dinner will be 7 p.m.



ROBERT A. MAYERS

Group Names Robert Mayers 'Outstanding'

The annual Distinguished Service Award was presented by the Elizabeth Junior Chamber of Commerce to Robert A. Mayers of Belleville, personnel manager of The Thomas & Betts Co., for leadership and service to the community during 1962. The presentation was made at the annual Jaycee banquet held in the Kingston Restaurant, Union.

Mayers was chosen as Outstanding Young Man of the Year by a committee made up of distinguished citizens of the community. Their decision is based on 1. contributions to community welfare during the year, 2. evidence of leadership ability, and 3. evidence of personal or business progress.

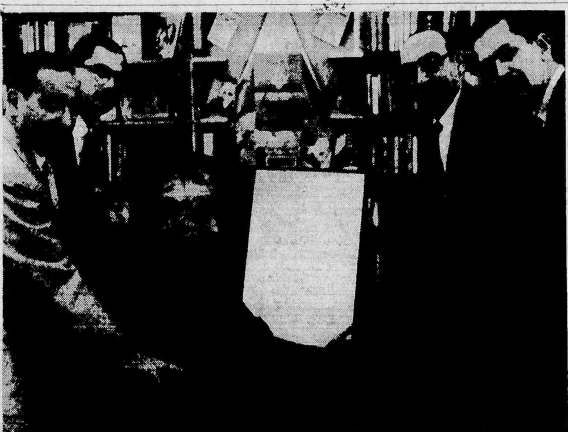
A graduate of Rutgers University, Mayers has been associated with T&B in Elizabeth for over four years. He is co-chairman of the Industrial Division of the United Fund of Eastern Union County, and has been a member of the Policy Board of this organization. He is on the board of directors of the Community Welfare Council of Eastern Union County, and on the Citizens Advisory Council of the Elizabeth Public Library. He is active on several committees of the Chamber of Commerce of Eastern Union County. Recently he played an important part in the building fund drive for St. Elizabeth's Hospital.

LEG BROKEN IN ACCIDENT

An accident at Rafter Machine Co., 259 Stephens Street, Belleville, sent one of its employees to Clara Mass Memorial Hospital with a broken leg Wednesday morning.

Police said Joseph Monaco, 30, of Jersey City, was taken to the hospital after his leg was crushed by a falling box at the plant.

It's Jewish Book Month In Belleville, And Mayor Laterza Marks The Occasion With A Proclamation Urging All To Participate



For the next 30 days the Belleville Public Library will have its number of volumes increased by some 500 as Congregation Ahavath Achim added its Congregation Library to those of the public library shelves in observance of the proclamation of Jewish Book Month. Belleville Mayor Robert M. Laterza, center, signed the document at the Library Thursday afternoon. From left are Wilfred Yudin, Temple president; Rabbi Victor Cohen of Congregation Ahavath Achim, Mayor Laterza; Dr. Seymour P. Fischer, chairman of the Temple book committee; and Elen Grimm, Belleville library director.

Belleville Overpowers Grid Squad From Nutley 33-12

By RAY FERSKO

For the first time in nine years (1952-12-0) the Belboys stunned Nutley's Maroon Raiders by an impressive 33-12 score. Led by the outstanding running of Greco, Luzzi, Tomaszewski and Senesky, Belleville proved its strength as a group IV championship contender.

Richie Benciveni kicked off for Nutley and Belleville's Pat Valesse ran it up to the 50. After a quick drive play by Tomaszewski and a 30-yard runoff tackle by Luzzi, Senesky misused and Nutley took over. With Tommie Bogdon at control, Nutley couldn't move an inch against the sturdy Belboy defense. Three plays la-

ter Belleville took possession inside the Nutley 40. From here the Belboys worked up field with a pass to Pomponio, an end run by 130 lb. Greco and a Senesky drive play. Then with third down and six yards to go, Latoro beautifully mastered a handoff to Jarvis Senesky, who paced six yards around right end for the tally. Luzzi's placement was good.

Senesky kicked off for Belleville and Nutley's Bob Lembo ran it up to his own 23. Two plays later alert Luzzi intercepted the ball for Belleville and the Blue and Gold began patterning toward the goal with two runs by Greco and finally the score by Tomaszewski, who barreled over the middle taking three Nutley men with him. Luzzi's kick failed.

Blasi DiGirolamo received the next kick for Nutley and ran up to the Maroon 40. Once again Nutley was forced to get rid of the ball and the Belboys took

possession.

The Congregation Library staff is Mrs. Oscar Kettler, Mrs. Ely

(Continued On Page 2)

Youth Is Made Happy With Pedigreed Dog

A pedigreed German shepherd is the special reason for a hand-capped Nutley youth to be thankful this Thanksgiving. The championship — bred dog was a birthday surprise last week from the Cerebral Palsy School and Treatment Center, Belleville, to James Phillips of 17 Brown Street, Nutley. A student in one of the center's Board of Education classes, James, son of Mr. and Mrs. Louis Phillips, celebrated his 16th birthday recently.

(Continued On Page 2)

Reprinting Of Ordinance To Be Resumed

The Times-News is being published early this week because of the Thanksgiving holiday. This has necessitated a somewhat smaller paper than usual, and we have been obliged to omit the fourth installment of the ordinance banning the distribution of snail literature and regulating the distribution of handbills in Belleville. The tales will be continued next week.

Wants More Gambling To Raise Revenues



JAMES R. GOLDEN

Councilman James R. Golden, in a speech delivered last week at the annual convention of the League of Municipalities held in Atlantic City publicly endorsed off-track gambling as a means of raising revenue.

(Continued On Page 2)

Town Manager William A. Sommers made his second attempt in two weeks to stop the investigation of the Revenue and Finance Department authorized by the Town Council on August 27.

The first attempt was made by Sommers on October 8 when he refused to turn over the books and records of the town to the investigators authorized by the Town Council. Mayor Robert M. Laterza made Sommers change his mind and permit the investigators to proceed.

On October 19 Sommers ordered his deputy, Charles Tedesco, to phone Mayor Laterza, Deputy Mayor G. George Addonizio and Councilman Vincent T. Strumolo with an offer of job security for Ralph Risoli, town Registrar in exchange for a promise from the officials to call a halt to the investigation.

Rink Operator Recognized In Map Page Photo

Congratulations to Mrs. Peter Nicolette of 46 Mitchell Street, Belleville! She correctly identified the person circled in the picture on the Times-News Map Page last week as Willie Mishkind. She also correctly identified the place where the picture was taken as the Riviera Park Roller Skating Rink at 701 Washington Avenue.

Mr. Mishkind and his wife Anna have owned and operated the Riviera for 34 years, and it is believed to be the only roller skating rink of its kind. It's a banked rink, where fast skating can be done on the outside lanes, while the middle portion is appropriate for regular or fancy skating.

Mrs. Nicolette will receive a check for \$5 from our cooperating businessmen of the week, William G. Smith, well known Belleville optician.

(Continued On Page 2)

Sommers Fires R. Risoli Day After Thanksgiving

William A. Sommers, Town Manager, notified the Town Council by letter dated November 16 that he had decided to fire R. Risoli, one of two reasons for firing Risoli, "one, to eliminate the position of Temporary Senior Clerk which is not now essential, and two, the directorship of the Department of Health should be under a certified professional approved by the Department of Health."

Risoli has been working in the Department of Health since June, 1958. Risoli is married and the father of two daughters. Shortly after the new Council members were elected, both Councilmen James R. Golden and Thomas P. Greco urged their colleagues in private conferences to consider a raise in pay for Risoli.

Varsity Club Arranges Fine Program For Football Banquet

Details of the program of the 18th annual football banquet were completed this week.

George Zoppa, chairman of the banquet committee, announced that the "Bo" Belboys of the New York Football Giants will be the principal speaker. "Bo" is a big fat tackle of great promise who was sidelined by injuries part of the year. He played offensive and defensive tackle for three years at Lehigh University. In 1960 and 1961 "Bo" won All-Atlantic Coast Conference honors. Most memorable event in his college career was an interception sent trophies to the senior members of the team while members of the Varsity Club will present the Most Valuable Award and the Most Improved Award.

An unusual highlight of the program this year will be the presentation of the Belleville - Nutley Trophy by the Nutley Third Hall Club to the Belleville Varsity Club. The banquet will be held at the Robin Hood Inn in Clifton on Thursday, November 29, at 7 o'clock.

FULL PAGE OF FOOTBALL PICTURES INSIDE

Belleville ABC Board



Newly appointed members of the three-man Alcoholic Control Board are shown seated at a desk at their headquarters after their

appointment by Belleville Mayor Robert M. Laterza recently. From left is Frank Bruno, a service station operator who will serve one year; Norman Lauterette, chairman of the board and an executive with National Yeast, serving a three year term; and Anthony Di Geronimo, employed by Adey's Express, who will serve one year. The board meets monthly.

Sommers

(Continued From Page One)

Investigators have already found enough in their digging through the records to warrant a presentation to the Prosecutor on at least one count.

Michael A. Querques, former chairman of the criminal division of the United States Department of Justice's office in New Jersey is counsel to the investigation committee headed by Ad-

Map Page

(Continued From Page One)

A new contest is now under way. Be sure you follow the rules. Identify the person circled in the picture by giving his or her

full name, and also state the place where the picture was taken.

The answer must be delivered in person to the office of The Times-News, 246 Washington Avenue, or it may be sent through the mail. Telephone entries will not be accepted.

The prize will be awarded to the person who first submits a correct identification of the subject in the picture and the place where the picture was taken. Only one person in a family may submit an answer.

The contest deadline is noon on Friday of the same week that the Map Page appears. If no correct identification is made by that time the prize will be added to the following week's award.

A decision by The Times-News as to the winner is final and may not be disputed.

Postmaster

(Continued From Page One)

and gift packages. Schedule your Christmas mailings so that your cards and gift packages going to most distant points are mailed by December 10. Mail Christmas packages for local destinations by December 15, and by all means, be sure to mail your Christmas cards for friends and relatives in this area at least a week before Christmas.

Use air mail for Christmas cards and gift parcels for distant points, especially for your last minute mailings.

It's Jewish

(Continued From Page One)

Rubin, and Mrs. William Helperin, librarians; and Mrs. David Robbins, chairman of book endowments.

Additional information on the program may be obtained by contacting the library or Congregation Ahavath Achim.

The Proclamation, signed by Mayor Laterza reads as follows: WHEREAS:

The Jewish People have lived by the Good Book and have considered this Book above all others as its good friend and WHEREAS

This year special emphasis is given to the Bible and its importance for daily living and WHEREAS

NOW THEREFORE, is the period for November 18th to December 18th, 1962, proclaimed as Jewish Book Month and this fourteenth day of November 1962, do affix the Seal of My Office as

Mayor of the Town of Belleville, County of Essex, State of New Jersey to this Proclamation.

Robert M. Laterza Mayor

A display of books of Jewish content is now at the library and may be seen, and borrowed, during the next month.

Belleville

(Continued From Page One)

over. On the first play from scrimmage, Luzzi broke loose and ran 60 yards down field until brought down by the Raiders big Don Sellari. After three more Luzzi dive plays, Tomaszewski fumbled in the endzone and Nutley took over. With substitute quarterback Mease in, they vainly tried to penetrate the Belleville defense led by Goglia, Strumolo, Horvat and Pomponio. Belleville then took the pigskin on the 50. In three long plays which finally resulted in a 19-yard run by Senesky the Blue and Gold got their third score of the game. Luzzi completed the placement.

Lenbo took the next kick and jaunted it up to his 43. Once

more Nutley was forced to kick and Belleville took possession. With two runs by Senesky, one long one by Luzzi, a Pomacoe pass to Luzzi and finally a 28-yard pass from Laterza to Pomacoe, Belleville scored its fourth touchdown of the game. Luzzi then made the conversion, giving the Bellboys a 26-0 margin.

Nutley's highly rated Pletoso received the next kickoff. After four plays Nutley, still unable even to get a first down, gave the ball back to Belleville. With Frank Pomacoe at control, Belleville again took over until time ran out.

SECOND HALF

Senesky kicked off for Belleville and Pletoso ran it up to his own 40. With runs by Pletoso and Lenbo, Nutley scored its only first down. The hard-hitting Belleville defense then pushed the Maroon raiders 30 yards back and took over deep in Nutley territory. Both teams exchanged the ball twice and again Belleville

led by Frank Pomacoe took over. On the third down young Pomacoe was hit hard and the ball was grabbed up by left tackle Byron Ennis, who scrambled 10 yards for a touchdown. The explosive defense blocked DiGirolamo's kick.

Luzzi received the next kickoff and magnificently ran it 65 yards until brought down by Sellari and Battaglia. Two plays later, Luzzi stepped back and kicked the extra point.

Lenbo ran the next kick up the middle 45. With Bogdan at control the Maroon pass play turned downhill, until stunted on the 36 where Belleville took over. For the first time Senesky dropped back to kick but it was blocked and Nutley took over on the 15. After three plays, Nutley's Bob Lenbo raced over for the score. The tough defense blocked the kick. From here the time ran out and Belleville once again emerged victorious.

Youth

(Continued From Page 1)

When his teacher first learned from an English class composition of his longing for a German shepherd, center therapists were consulted. They decided walking a dog would give James needed exercise and help alleviate his handicap. Miss Edith A. Aynes, executive director, resolved to spare no efforts in obtaining one.

Calls to animal shelters throughout the area proved futile. But an appeal to a veterinarian friend led to a kennel in Middletown, N.Y., with a German shepherd available. The kennel owner, hearing that a cerebral palsied youth wanted the dog, offered to donate it.

The dog changed hands when Miss Aynes met the kennel owner at the junction of the Garden State Parkway and the N.-w. York thruway and returned with the pet in time for James' birthday.

YOU AND YOUR INSURANCE

(A public service column about all forms of insurance.)

An Observation

There is hardly anything in the world that some man cannot make a little worse and sell a little cheaper.

The people who consider price alone are this man's lawful prey.

Be sure — insure in sure insurance

DEAL WITH AN INDEPENDENT AGENT

There are no strings on an independent insurance agent. Take a good, fresh look at the man from whom YOU buy insurance. Is he free to put YOUR interests before those of an insurance company? He is... if he's an independent insurance agent. For insurance tailored to your needs, call us. We're pledged to serve you first! This column will be glad to answer any questions you may have about property and casualty insurance. Send Carl A. Orzech or to them to:

The Belleville Times to the attention of the Orzech Agency, 43 Washington Avenue Nutley 10, New Jersey

PARISO BROS., Inc.

FINE FURNITURE
FAMOUS BRANDS

PLAID Stamps With Every Purchase

PLUS

1000 BONUS PLAID STAMPS

Bonus of 1000 Plaid Stamps
With Any Purchase of \$100.00



- SHOWING OVER -

75 KITCHEN AND DINETTE SETS 25 LIVING ROOM SUITES
25 BEDROOM SUITES 25 DINING ROOM SUITES

FEATURING ITALIAN And FRENCH PROVINCIAL
DANISH MODERN And CONTEMPORARY

16 & 20 WASHINGTON AVENUE

BELLEVILLE

Buy Direct From FACTORY and Save \$
See Your Windows Being Made
DANALUME INC.
328 Belleville Turnpike, Kearny WY 1-2351

Fully Extruded Aluminum
Triple Tilt
Combination
STORM WINDOWS
\$9.95
Per Window
MEASURED
No Extras - No Minimum

Bring Outdoor Living Inside with a beautiful **JALOUSIE PORCH**. We will completely install it, or show you how to do it at **ADDITIONAL SAVINGS!**

JALOUSIE PORCH ENCLOSURES	\$159 from ft.
ALUMINUM SIDING Alcoa - Kaiser - Reynolds	
• 14 Beautiful Colors	
• Cuts Costly Painting	
• Cuts Fuel Bills As Low As	\$
• Beautifies Your Home	
• Limited Offer	
• Cuts Maintenance	

Free Estimate • No Obligation
No Money Down
Up To 5 Years to Pay

SERVICE AT ITS BEST
Factory Showroom Open 8 a.m. to 6:30 p.m.
Monday thru Friday - Saturday 'Till 12:00 noon

BATH TUB ENCLOSURES
44.50 24.95

plan now to visit the...

East Orange
ANTIQUES FAIR & SALE

NOVEMBER 26th thru 30th
Monday thru Friday, 1 to 10:30 P.M., closing 6 P.M. Friday

HOTEL SUBURBAN
141 South Harrison Street, East Orange, N. J.

NUTTALL MANAGEMENT

HOTEL JEFFERSON
ATLANTIC CITY
NEW JERSEY

Central location overlooking Boardwalk and convenient to Piers, Churches and Theatres — Near Rail and Bus Terminals — Inviting Lobbies and Parlors — Closed and Open Sun Decks Aop — All Rooms Delightfully Furnished — Modified and European Plans — Conducted by Hospitable Ownership Management that delights in catering to the wishes of American Families. Write for Literature and Rates

Hotel Jefferson
Atlantic City, New Jersey

De Witt's
SERVICES are
TOP-DRAWER



Drive-In Window, Walk-Up Window, plenty of on-premises Free Parking — all planned to provide you with the best in fast, comfortable, convenient service, plus a friendly, helpful staff ready to assist your financial needs.

4%
per annum



De WITT SAVINGS
AND LOAN ASSOCIATION

463 WASHINGTON AVENUE, BELLEVILLE, N. J. • Plymouth 6-5204
Daily, 9 to 4; Mon. Even. 6:30 to 8.

HOME FURNISHINGS DAILY

FOR FURNITURE

Mail Houses See
Good 4th Quarter

Color TV Shortages
Loom for Christmas

NRA URGES 'LIST' TERM BE DROPPED IN ADVERTISING

The distinct possibility of shortages of best-selling color television sets is in the offing and probably will cut into the industry's potential volume during the "hot" Christmas buying season.

The headline tells the story. If you want an RCA color TV set for Christmas, you have your choice now. Later on you may have to take what is left.

The all important installation and initial set up and service is done by our own technicians. We have 8 years experience servicing RCA color sets.

"We Service What We Sell"

Radio TV

BECK'S

Hi-Fi Organs

196 Franklin Ave., Nutley

667-2275

Hours: 9 to 6 - Mon. - Fri. 9 to 9

"Brazen"

Today The Times-News discloses an effort by Town Manager William A. Sommers to trade job security for Ralph R. Rioli, town registrar, in exchange for a promise by Mayor Robert M. Laterza, Deputy Mayor G. George Addonizio, and Councilman Vincent T. Strumolo to call off the investigation of the Revenue and Finance department now in progress and authorized by the Town Council on August 27.

Councilman Vincent T. Strumolo called Sommers "brazen." We think the Councilman is putting it mildly. Deputy Mayor Addonizio is angry and Mayor Laterza wants no part of the Sommers' offer.

By his offer of a deal Sommers has precipitated a new crisis in his relationship with the Town Council.

The Tammany-type deal offered by Sommers practically makes his stay in Belleville intolerable. Belleville cannot afford to keep a Town Manager who wants to trade job security for an investigation.

Just why Sommers has gone to extremes to call off the investigation of the Revenue and Finance department remains an enigma.

Last week Sommers admitted that he attempted to block the investigation on October 8 by refusing the investigators access to the town's books and records. At the time Sommers said he was concerned over the cost of the investigation.

In the light of his latest effort to bring an end to the probe his excuse of October 8 needs a reexamination.

We think Sommers has made it clear to everyone that not only is he brazen but arrogant as well.

Now the question is will the Council have the guts to come to grips with the ethical problem created by this latest disclosure?

Lesson In The Sky

When the day's work is done and we're winding our way homeward, we linger a moment atop of the hill to admire the beauty and absorb some of the lessons presented to us in a fall sunset.

A mighty crimson conflagration warming the sky against the chill of the oncoming night.

Distant, purple mountains, solidly anchored and riding out a cloudburst of color. The whole world, sometimes so real—and so cold—suddenly becomes a multi-hued dream, warm and friendly.

Overhead a protective canopy touched by a brush in the hand of the Master Artist.

Just an ordinary dream? No, the kind of a dream that doesn't slip away when we are "brought back," but remains with us as a lesson in what we could make of life if we all determined to live it—IN HARMONY.

A DEN DeRONDE

will have to be met from taxes to be raised next year.

It would be well for taxpayers to remember these facts when appraising the performance record of our new Town Councilmen.

Convention Expenses

Some of our Town Hall employees left town last Tuesday for their annual pilgrimage to Atlantic City. The delegation this year was headed by our genial, economy-minded professional Town Manager, William A. Sommers.

Sommers did the inviting — and the taxpayers will be obliged to foot the bill.

At least three officials to our knowledge turned down Sommers' invitation to live it up at Atlantic City at the expense of our oppressed taxpayers. They were Mayor Robert M. Laterza, Deputy Mayor G. George Addonizio, and Councilman Vincent T. Strumolo.

We must await the presentation of bills before a full accounting can be made to the people of Belleville.

If this safari produces no more than past trips under the auspices of our Commission government it will probably end up as a total loss for the taxpayers.

Again we make our annual complaint — the expense to send a delegation of town employees to Atlantic City year after year is a waste of taxpayer money. We think a better use can be made of the money — i.e., pay the investigators who are examining the operation of the Revenue and Finance Department under the Commission form of government.

Town Employees And Politics

We endorse the proposition that municipal employees should keep aloof from political activity. However we believe a municipal policy of this nature should be established by the Town Council. Our Town Manager, William A. Sommers to the contrary, we do not believe he has the authority to make such a decision. Our Town Attorney should be asked for his opinion respecting Sommers' authority to enforce such a ban.

What surprises us is the fact that Sommers proceeded with the enforcement of his policy on November 7 by the issuance of an Administrative Order which bears Number 3-62, completely ignoring the Town Council. We are in the dark as to what the first two orders covered.

Some people have accused Sommers of acting in a dictatorial fashion — a czar of sorts. His Administrative Order No. 3-62 concludes as follows:

"Nothing in the foregoing, however, shall be construed to prevent employees under the direction of the manager from coming or continuing to be members of any political organization, from attending political meetings or from voting with complete freedom in any election." It is very charitable and considerate of Sommers to permit public employees to "vote with complete freedom in any election." More surprising is the revelation that he could offer such a guarantee without first ascertaining the attitude of our Town Council.

The School Board Budget

The year-end is almost upon us and to each of us the first of the new year signals a different meaning. To school board members it means another battle of the budget.

The Cuban crisis will require additional expenditures of federal funds, adding to the anticipated deficit of seven billions of dollars. At the state level the Governor is asking for more funds to build much needed highways, state institutions, and provide pay raises for thousands of state employees.

The county government will also have its hand out for a greater share of our local taxpayer's money. But after all, it is the same taxpayer who voted the spenders back into county control and at the state house. They deserve what is in store for them — more and higher taxes.

At the local level the school board spends a major share of our tax dollar. If the teachers receive a substantial raise how can a like raise be denied to other, equally deserving public employees at town hall? Fairness requires they be treated alike.

Frugality should be the cornerstone of the new school board budget. Any other approach would foredoom the budget which must receive the approval of our voters at the February election.

Unfortunately municipal services and our school system must suffer because of the extravagances of our county, state and federal governments.

UP SPEAK

HE WANTS PARADE ROUTES MORE THOROUGHLY PLANNED

To The Editor, The Times-News:

The annual Veterans Day Parade held on Washington Avenue on the evening of Nov. 12th was one of the best yet—however, the obvious lack of interest shown by the citizens of Belleville must be very discouraging to marching units who traveled here from as far away as Union Beach, Orange, and Neptune.

The line of marchers was, as usual for all Belleville parades, much too long; thus the crowd that viewed the parade was so scattered (except for between Rutgers Street and Belleville Avenue) that it seemed there were hardly anyone watching.

Why don't the people who organize these marches use their heads for once and start the next parade Belleville has somewhere around Essex Street? Alfred J. Smith 249 Fairway Avenue.

Oral Polio Vaccine To Be Delayed

Dr. S. William Kalb, president of the Essex County Medical Society announced that the Society will re-evaluate the entire Sabin Oral Polio Vaccine program and postpone a county-wide immunization program which was scheduled to begin November 18.

Dr. Kalb said that reports from Canada and elsewhere indicating persons contracted polio after taking Sabin Vaccine, have shaken the confidence of the public at this time.

"This would defeat the purpose of our mass immunization program," he said. "We feel participation in such a program would not be as great now as is necessary to assure complete control of this crippling disease."

The medical profession of Essex county remains deeply concerned with the problem of eliminating polio and will do everything possible, within the limits of sound scientific principles, to carry out this aim should the present doubts concerning Sabin oral vaccine be clarified," Dr. Kalb added.

Rec. Bulletin Board

FRIDAY

3:30 p.m. — Jr. Barbell Club — Stadium.
7:00 p.m. — Sr. Barbell Club — Stadium.
7:00 p.m. — Jr. Rifle Club, Stadium.

SATURDAY

9:00 a.m. — Recreation-Kiwans Girls and Boys Bowling Leagues Olympic and Branch Brook.
9:30 a.m. — Basketball Clinics, boys 10-14, H. S. Gyms.

MONDAY

9:15 a.m. — Preschool Play Program — Recreation House.
1:30 p.m. — Monday Afternoon Sewing Club — Recreation House.

3:30 p.m. — Jr. Barbell Club — Stadium.
7:00 p.m. — Sr. Barbell Club — Stadium.
7:00 p.m. — Girls Fencing, High School Gym.

7:00 p.m. — Woman's Bowling League — Branch Brook Lanes.
7:00 p.m. — Girls Gym — High School Gym.

TUESDAY

9:15 a.m. — Preschool Play Program — Recreation House.
3:30 p.m. — Jr. Barbell Club — Stadium.
7:00 p.m. — Sr. Barbell Club — Stadium.
7:00 p.m. — Boys Club — Friendly House.

7:00 p.m. — Boys Jr. Rifle Club — Stadium.
7:00 p.m. — Men's Bowling League — Branch Brook Lanes.
8:00 p.m. — Draggins Dragons — Recreation House.

WEDNESDAY

9:15 a.m. — Preschool Play Program — Recreation House.
3:30 p.m. — Jr. Barbell Club — Stadium.
7:00 p.m. — Sr. Barbell Club — Stadium.

7:00 p.m. — Boys Club — Friendly House.
9:00 p.m. — Women's Bowling Leagues — Branch Brook Lanes.

Library Books For Belleville

Four new books were added to the shelves of the Belleville Public Library last week dealing with the procedures of life insurance through the courtesy of Newark Life Underwriters who made the presentation.

Ben T. Grinn, who accepted the books for the library, said the specialized books were often beyond the financial means needed to purchase such informative material. The books deal with the intricacies of life insurance in its many facets.

As a public service, therefore, through the Institute of Life Insurance and the National Association of Life Underwriters, is promoting a national program of books to public libraries. The gift to the Belleville Public Library is part of this program.

The collection of books and pamphlets was particularly chosen for general consumer interest. All may be borrowed under the standard library rules.

Some of the pamphlets will be useful to young people interested in career opportunities in insurance. Others present basic reference information about life insurance companies, services and investments.

The four books are: — "The Logic of Life Insurance" by Paul Speicher. This little book presents life insurance in an original way — a thought-provoking idea for people concerned about methods of guaranteeing financial security.

"A Short History of Life Insurance" by Mildred F. Stone. This is the only book of its kind to show the human side of life insurance service from its beginnings until modern times, with specific suggestions about today's life insurance programs.

"Life and Life Insurance" by Griffin M. Lovelace. Easy reading for the average consumer, full of specific information about the uses of life insurance in family and business situations. It combines a wealth of human interest stories with important factual information about tax and estate problems and the fundamentals of life insurance.

"Introduction to Life Insurance Vol. 1" by J. E. Maclean. A study book about the basic facts of life insurance policies. It covers at an elementary level the arithmetic of life insurance and the features of life insurance policy contracts.

New Jersey stands very high in its ownership of life insurance protection. Being the 46th state in the Union in order of size, New Jersey ranks third in the aver-

age amount of insurance owned by its families. For the nation, the average family ownership is \$800; for New Jersey, \$11,300. The protection guaranteed New Jersey residents under all forms of life insurance policies is over \$27.5 billions.

Belleville Girl To Serve In Peru As A Nurse In Peace Corp

The Peace Corp gained a new recruit last week when Katherine Peck, 19-year-old daughter of Dr. and Mrs. Samuel Peck, 21 Clearman Place, Belleville, successfully completed a three-month training course in Puerto Rico. She returned home Friday for a ten-day furlough before leaving for Lima, Peru where she will work as a public health nurse. She is a 1962 graduate of Rutgers College of Nursing, and graduated from Belleville High School in 1960.

Del Guercio Returns From Company School For Advanced Training

Ted Del Guercio, 80 Rutan Road, Belleville, has been awarded a diploma from Vale Technical Institute at Blairsville, Pa. Del Guercio, claim representative for State Farm Mutual Automobile Insurance Company in Union, has just returned from a three-weeks advanced training course in auto damage estimating and repair techniques at the institute. He is one of 800 State Farm men who will complete the course this year.

HOME OWNER LOANS

\$1,000 - \$10,000
Have A First Mortgage?
You Can Still Borrow Money!
Quick - Confidential - Service!
Tel. 523-6168

8:30 A.M. - 10:00 P.M.

SECOND MORTGAGE ASSOCIATES

All Types Of Financing



Alert young women choose Gibbs secretarial training—practical, rewarding, advancement in the fields of their interest. Work-study placement service. Ask for catalog.
KATHARINE GIBBS
SECRETARIAL
Pilgrim 4-2010

County Civil Service Head Labels Sommers Action Illegal

John J. Goff, president of the Essex County Chapter, New Jersey Civil Service Association, last week said, "The action of William A. Sommers acted illegally when he issued an order prohibiting town employees from engaging in political activities after work hours."

In his attack upon Sommers, Goff said, "The section of the Revised Statutes Title II of the Civil Service Act under which Sommers' edict was promulgated applies only to state employees." Not only that, added Mr. Goff, but the prohibition of political activity by state employees

Goff believes that Sommers' unfamiliarity with N. J. Civil Service procedures may have been responsible for the action. It is known that Sommers did not consult with Town Attorney Thomas D'Avella before he took the action which resulted in Goff's angry declaration of war.

FRATERNITY CHOICE

Jack Throckmorton, a sophomore at Rutgers School of Business at Newark and son of Mr. and Mrs. John Throckmorton, 46 Division Ave. has been extended a pledgehip to Delta Sigma Pi, a professional business fraternity.

CAPITOL

167 U. SHUNTON AVENUE
BELLEVILLE
PL 9-9315

NOW THRU TUESDAY
Robert Preston - Shirley Jones
Buddy Hackett
Hermione Gingold

"THE MUSIC MAN"

Con. Perform. Thanksgiving Day
Mat. Friday Nov. 23 - 1 P.M.

"REQUIEM FOR A HEAVYWEIGHT"

Con. Perform. Thanksgiving Day
Mat. Friday Nov. 23 - 1 P.M.

"Damn The Defiant"

Con. Perform. Thanksgiving Day
Mat. Friday Nov. 23 - 1 P.M.

FRANKLIN

Nutley -- North 7-0100

Now Playing - Thru Tues. J.

COLUMBIA PICTURES PRESENTS THE DAVID LIVENGOOD PRODUCTION

ANTHONY QUINN JACQUE GLEASON

MICKEY ROONEY JULE HARRIS

REQUIEM FOR A HEAVYWEIGHT

ALSO -- END BIG HIT!

Alec Guinness - Dirk Bogarde

DAMN THE DEFIANT!

COLUMBIA PICTURES PRESENTS

COLOR

BIG SAT. MATINEE SHOW!

Brand New - Latest Tarzan

"Tarzan Goes To India"

"Sink The Defiant"

THE PANTRY

PIZZA AT ITS BEST

BAKED ALL DAY EVERY DAY

FROM 11 A.M.

Meat Ball Sandwich . . . 25¢

CLOSED Wednesday After 2 P.M.

All Day Sunday

258 Washington Ave. — Across From Belleville H. S.

WE DELIVER—Usually In 1/2 Hour

PL 9-4339

Harvest of plenty



341 years ago, the Pilgrims set aside a special day to give thanks for a harvest of plenty. As we celebrate this Thanksgiving, we hope that in addition to offering thanks for the material gifts which God has given, you will join us in a prayer for peace and brotherhood throughout the world.

PEOPLES NATIONAL BANK AND TRUST COMPANY

237 WASHINGTON AVENUE



Parking for Customers
Adjoins the Bank Building



BELLEVILLE, NEW JERSEY

Member Federal Deposit Insurance Corporation

Member Federal Reserve System

We service what we sell

Nutley 667-2275

The Belleville Times

ADVERTISING, NEWS AND BUSINESS OFFICE

246 WASHINGTON AVENUE

BELLEVILLE, NEW JERSEY

Frank A. Orechio, Editor and Publisher

Essex Medical Auxiliary Plans Starlight Ball



Mrs. Robert J. Citrino of Nutley, Co-Chairman; Mrs. Harvey P. Einhorn of Short Hills, Chairman; Mrs. Harry Taft of West Orange, Reservations Chairman; and Mrs. Max Block of Upper Montclair, President, meet at the home of Mrs. Einhorn to plan the 25th anniversary Starlight Ball of the Women's Auxiliary of the Essex County Medical Society. The ball will be held Saturday evening, December 1, at the Chanticleer, Millburn.

Proceeds of the affair will benefit the Education and Research Foundation, provide nurse scholarships for girls from Essex County entering nursing schools,

and assist the Medical Student Loan Fund of New Jersey and Ch-III Service of Essex County. Other members of the planning committee, are Mrs. George C. Parel of Newark, Hostess Chair-

WHITE ELEPHANT SALE IS PLANNED

The Women's Auxiliary of the Clara Maas Memorial Hospital will have a Bazaar and White Elephant sale in the hospital 1st floor clinic wing area and ground floor cafeteria on Thursday and Friday, November 29 and 30. The sale will begin at 10 a.m. each day, and the public is invited. Chairman for the sale is Mrs. Elmer Maeson of Nutley. President of the Auxiliary is Mrs. Joseph Huemer of Belleville.

WHEN
DEATH
OCCURS
CALL

F. Douglas
Wadsworth

WADSWORTH FUNERAL HOME

524 Union Avenue
Plymouth 9-2879

KIERNAN

Dignified
Funeral Service

AVAILABLE TO ALL
REGARDLESS OF FINANCIAL
CIRCUMSTANCES

NON-SECTARIAN

KIERNAN FUNERAL HOME

GEORGE F. KIERNAN

101 UNION AVE. BELLEVILLE, N.J.
PLYMOUTH 9-3503

EXTRA WHEELS WITH SNOW
TIRES — FOR YOUR NEW CAR?

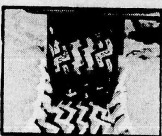
Wallace Has A Complete Line
Of Extra Wheels For
Your Convenience

FROM COMPACTS
To CADILLACS!



U.S. ROYAL
SNOW TIRES

with CVC Get them while they're
at LOW, LOW PRICES



\$12.95
from 6-70-15
BLACKWALL
TUBED-TYPE
Winter
Service
PLUS TAX AND SMOOTH TIRE OFF YOUR CAR

WIDE-BITE
TRACTION
SNOW TIRES

TIRES ARE OUR BUSINESS...WE SERVICE WHAT WE SELL
U.S. ROYAL SNOW TIRES

WALLACE TIRE & SERVICE INC.
COMPLETE TIRE SERVICE

Recapping - Vulcanizing, Tubes and Batteries

PLymouth 1-1593 709 Washington Ave.
Belleville, N. J.

For Your Convenience We Remain Open Fri. 'til 9;
All Day Saturday

QUICK SERVICE — 5 Expert Servicemen on Duty

Laffey Urges Holiday Seals To Lick TB

"Protect the family circle from contagious TB" is the aim of the Essex County Tuberculosis League whose traditional Christmas Seals are being received by 7,378 families and firms in Nutley, according to Thomas A. Laffey, of 157 Raymond Avenue, Nutley, the League's vice president.

Mr. Laffey reported that TB strikes one American every seven minutes around the clock, and kills someone once every 50

minutes. In 1961 there were 585 new TB cases reported in Essex County, an increase of more than 6 per cent over the previous year.

"Nearly 2 million Christmas Seals are now in the mail to local residents", Mr. Laffey said, "to raise funds to fight this Number One Contagious Killer. The battle is far from won. You can help to lick TB and shield yourself and your family by using Christmas Seals."

Mr. Laffey urged all residents to use Christmas Seals to fight TB.

"Contributions received this year must do more than maintain present TB control activities", Mr. Laffey said, "We must expand our efforts to find an estimated 300 unknown TB

cases lurking in Essex County. "Aid is now available to all TB patients, both in hospitals and under home-care. Our guidance program served 104 patients in the County last year, and we must increase our efforts to help. We must also extend our educational program so that people of all ages learn how to protect themselves from TB."

Annual Luncheon And Christmas Sale Will Be Held December 3

Court Gralla 751, Catholic Daughters of America, will hold its

annual luncheon and Christmas sale on Monday, December 3, at the Knights of Columbus Hall, Nutley.

Lunch will be served at noon and the Christmas sale will follow. Everyone is welcome.

Mrs. Gerhardt J. Kunst is in charge of the Christmas sale, and Mrs. John De Kenipp is in charge of the luncheon, assisted by Mrs. Robert Anderson, Mrs. Joseph Andryshen, Mrs. Wilbur Furlong and Mrs. Louis Magnifico.

Mrs. Fred Scott Jr. is Grand Regent of the Court and Rt. Rev. Msgr. James J. Owens, pastor of St. Mary's Church, Nutley, is chaplain.

BELLEVILLE TYPEWRITER & ADDING MACHINE CO.
WE REBUILD — SERVICE
All Makes
TYPEWRITERS & ADDERS
Portables - Standards
105 Washington Ave.
(cor. of William)
New & Rebuilt

PL 1-0068
Store Hours:
9 a.m. - 5:30 p.m.
Mon. - Sat.
(Sales)

WILLIAM V. IRVINE & SON
MEMORIAL HOME
For more than fifty years it has been our privilege to render personal service and offer friendly counsel to bereaved families. Our service is performed with reverence and dignity and is always within the means of all.
276 Washington Ave. Belleville, N.J.
Plymouth 9-1114
William V. Irvine Jr., Director

All Grand Union people join with you in offering their thanks

Swift's Premium
BUTTERBALL®
TURKEYS

17 to 24 lbs. Avg. Wgt. **39¢**
lb

10 to 16 lbs. Avg. **45¢**
lb

MOST LEG TENDONS REMOVED - EASIER TO CARVE - DEEPER IN THE BREAST!

All the fixin's

Save More on Traditional Thanksgiving Items!

FRESHPAK Cranberry Sauce 2 16 oz cans	35¢
GRAND UNION FANCY TINY PEAS 2 16 oz cans	45¢
PLANTERS Cocktail Peanuts 1 13 1/2 oz can	69¢
GRANDADASIL SARDINES BONELESS SKINLESS 3 3 1/2 oz cans	29¢
ROLLED or FLAT ANCHOVIES 2 2 oz cans	25¢
GRAND UNION PUMPKIN 20 oz can	19¢
FRESHPAK STUFFED OLIVES MANZANILLA 8 oz. brl.	49¢
GRAND UNION FIE CRUST Mix 2 16 oz pkgs.	27¢
FRESHPAK Stuffing BREAD 2 16 oz pkgs.	39¢
GRAND UNION Sweet POTATOES 18 oz can	27¢
DOLE SLICED PINEAPPLE 30 oz can	45¢
EARLY CALIFORNIA OLIVES JUMBO RIPE 3 9 oz cans	100¢
ROYAL PRINCE YAMS 16 oz can	29¢
SUNSHINE WIDE PARK COOKIES ASSORTMENT 12 oz pkg.	39¢
WESTON COOKIES CHOC. CHIP 14 oz pkg.	39¢

DEL MONTE FRUIT COCKTAIL 30 oz can 33¢

SWEET TENDER GREEN GIANT PEAS 2 17 oz cans 35¢

GRAND UNION TOMATO JUICE 2 46 oz cans 49¢

DOUBLE-RICH FLAVOR EHLERS COFFEE 1 lb can 59¢

SCOTKIN DINNER NAPKINS 2 pkgs of 50 45¢

YOU SAVE CASH AND

Prices effective through Wednesday, Nov. 21st. We reserve the right to limit quantities.

Mertz Named Director Of Civil Defense

Raymond C. Mertz, Jr. of 24 Beverly Court has been appointed as Director of Civil Defense and Disaster Control for Belleville.

Mr. Mertz is presently Municipal Court Clerk of Belleville and will continue in this position as well as serving as Civil Defense Director. His new position will be without pay.

Mr. Mertz, who is 38, is a lifelong resident of Belleville, is married and has a daughter Christine, 13. Mr. Mertz attended Public School 3, Rutgers University and served in the U. S. Navy for six years. Mr. Mertz is a member of the Belleville Masonic Lodge and Belleville Craftsman Club.

STUDENT HELPS UNICEF
Rick D. Brewer, 115 Malone Avenue, Belleville, is a member of the East Carolina College's campus radio staff, and helped produce the UNICEF Dance recently. The radio station contributed \$223.55 to the emergency fund.

HOW ABOUT THAT FUN - CRUISE?



PICK ONE TO FIT TIME AND BUDGET!



A week? Two? Longer? Want to "live it up," or travel economically? We'll plan your dream cruise... living aboard ship or stopping over in exotic ports. Leave everything to us... except the fun!

Passports, visas, sight-seeing and stop-over hotel accommodations arranged at no extra cost.

HARRISON TRAVEL SERVICE

The Happiest Trips... Begin Here!

HU 4-3400

3A N. 4th STREET

HARRISON



MODERN MEDICINES CAN ADD TO LIFE EXPECTANCY

But, only a physician has the knowledge and skill to properly select the exact ones your body needs.

We stock more than 4,000 different prescription medicines. Therefore, we can compound prescriptions written by any physician, practicing medicine locally or in distant cities.

YOUR DOCTOR CAN PHONE US when you need a medicine. Pick up your prescription if shopping nearby, or we will deliver promptly without extra charge. A great many people entrust us with their prescriptions. May we compound yours?

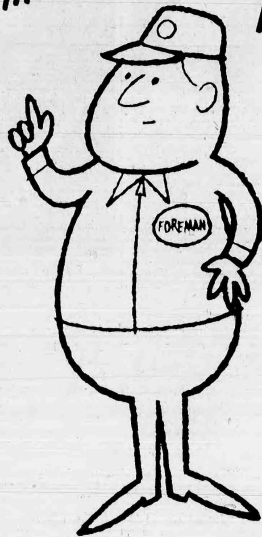
ABBOTS DRUG STORE

531 Washington Avenue Belleville, N. J.

Reliable Prescriptions

PL 9-8181

This is a foreman



So is this



They both bank at Fidelity

Foremost among our wishes are these: to know you, to serve you, to make of you a rockbound, ironclad Fidelity regular. Maybe the people at your nearest Fidelity office didn't invent friendliness, but once you meet them you'll admit they certainly have raised it to a fine art.

FIDELITY

UNION TRUST COMPANY

Newark, Belleville, East Orange, Irvington
Member Federal Deposit Insurance Corporation

Grand Union is the place to buy the famous brands you know!

BACKED-BY-BOND THANKSGIVING

Turkeys



Thanksgiving Week Store Hours
TUESDAY
WEDNESDAY
FRIDAY
CLOSED THURSDAY—THANKSGIVING

U.S. GOV'T
GRADE 'A'



17 to 24
lbs.
Avg. Wgt.

33¢

10 to 16
lbs.
Avg. Wgt.

39¢

lb

lb

DELICIOUS SERVED WITH OCEAN SPRAY CRANBERRY SAUCE

Pick of the Harvest-For Thanksgiving Feasts!

FANCY CALIFORNIA

Emperor GRAPES

LARGE
FIRM
CLUSTERS

2 lbs. 29¢

FRESH, TENDER
BRUSSELS SPROUTS 10 oz. pkg. 19¢

FRESH CAPE COD
CRANBERRIES OCEAN SPRAY 1 lb. pkg. 19¢

CHESTNUTS IMPORTED ITALIAN 2 lbs. 45¢

APPLE CIDER FRESH, SWEET gal. 69¢

FRUIT CAKE MIX 1 lb. pkg. 49¢

U.S. NO. 1 - BOILING
WHITE ONIONS 2 lbs. 29¢

FRESH PAK
PITTED DATES 8-Oz. Pkg. 49¢

WALNUTS DIAMOND IN SHELL 1 lb. pkg. 49¢

MIXED NUTS FANCY IN SHELL 1 lb. pkg. 49¢

TURKISH FIGS IMPORTED 1 lb. pkg. 39¢

Nancy Lynn

WITH THAT HOMEMADE GOODNESS

FRUIT CAKE

SEASON'S GREETINGS 2 lb. pkg. 99¢
DELUXE FRUIT CAKE 2 lb. pkg. \$1.89
DELUXE IN JEWEL BOX 5 lb. pkg. \$5.75

over two-thirds fruit and nut meats

DELUXE HOLIDAY
FRUIT STOLLEN 1 lb. 89¢

FRESH BAKED
MINCE PIE 1 lb. 69¢

30¢ EXTRA WITH PURCHASE OF PUMPKIN PIE

20¢ EXTRA WITH PURCHASE OF SILVER SQUARE

Frozen Foods

NANCY LYNN

DELUXE ICE CREAM

quart plastic cont. 79¢

STRAWBERRIES 2 1/2 lb. pkg. 45¢

SEABROOK FARMS GREEN BEANS 2 1/2 lb. pkg. 39¢

DORANN CANDIED YAMS 14 oz. pkg. 29¢

TRIPLE-S BLUE STAMPS!

Prices effective through Wednesday, Nov. 21st. We reserve the right to limit quantities!

SOCIAL AND CLUB NEWS OF COMMUNITY INTEREST

John Piserchia Marries Miss Lardiere Of Newark



MRS. JOHN PISERCHIA Former Beverly Judith Lardiere

In a late afternoon ceremony on Saturday, November 10, Miss Beverly Judith Lardiere and John Piserchia exchanged vows in St. Francis Xavier R. C. Church, Newark. The Rev. Charles V. Scanlon, pastor of St. Francis Xavier, officiated. Mrs. Mary Ruzolo sang, accompanied by Lawrence Long, church organist. The bride is the daughter of Mr. and Mrs. Anthony Lardiere of Newark, who own and operate The Pashy Pizzeria at 238 Washington Avenue. Mr. Piserchia is the son of Mr. and Mrs. Frank Piserchia of Academy Street. Escorted to the altar by her father, the bride wore a full length gown of silk peau de soie, fashioned with round neckline, three quarter sleeves, and chapel train. Appliques of Alencon lace and seed pearls enhanced bodice and sleeves. Her two-tiered veil fell from a crystal and pearl crown and she carried white orchids and stephanotis on a missal. Mrs. Michael Salimbene of Newark was matron of honor and bridesmaids included Miss Brenda Ahr of Newark, Miss Rosalie Pirona of Belleville, and Miss Maxine Teser of Bloomfield, a cousin of the bride, Maria Calabrese, a niece of the bridegroom, served as flower girl. The bridal attendants were: itically attired in candy pink gowns fashioned with velvet tops, bell-shaped satin skirts, round necklines, and elbow length sleeves. The honor attendant carried a muf of white carnations with a cascade of roses. The bridesmaids carried muffs of white carnations tipped in pink to match their gowns. The flower girl carried a basket of white carnations, similarly tipped, to match her dress. Gerard Piserchia was his brother's best man, and ushers included Joseph Piserchia, another brother, and Robert Andriano and Bernard Geselli, both of Newark. Joseph Calabrese, nephew of the bridegroom, served as ring bearer. The bride's mother wore gold peau de soie with matching accessories, while the bridegroom's mother chose willow-green peau de soie. Both wore a white orchid corsage. The bride is a graduate of Essex County Vocational and Technical High School. She is employed by the sheriff's department, Essex County Court House. Mr. Piserchia is employed by Spring Neckwear Company, Belleville. After a wedding trip to the Pocono Mountains, the couple will make their home at North 10th Street, Newark.

NUTLEY CENTER
OVER 25 yrs of
CORRECT SHOE
FITTING
FLORSHEIM
Shoes
BUNNERS
PRO-TEK-TIV
MODERN TRED
SHOE STORE
1000 N. 10th Ave. Nutley

FREE
IN EVERY DROP OF
HAWKINS
FUEL OIL
AMAZING
PETROMISER 20
ADDITIVE
Eliminates fuel-robbing soot
CUTS FUEL BILLS
UP TO 20%
John Hawkins
And Son
NO 7-1800
Established in 1892
198 Park Ave., Nutley
Your Family's Comfort
Is Our Business

PLEASE NOTE
Material submitted for publication in the Social Section of THE TIMES should be submitted at least one week in advance of the release date. Material must be typed or written legibly, with proper names and addresses printed out. The name, address and telephone number of the person submitting the article must also be indicated. There is no charge for any material used.

Complete Heating Systems
For All Your Heating Needs Call
PLYMOUTH 9-1907
46 Eugene Pl. Belleville
OUR FUEL OIL MAKES WARM FRIENDS
Now new low cost installation prices.
Low cost service contract including parts coverage
Convenient monthly budget plan.
24 hour emergency service.
HILLTOP RIVIERA OIL CO., INC.

Dental Honor Society Elects Robert Hilkene



ROBERT HILKENE

Robert Hilkene, a graduate of Belleville High School and a junior at the University of Maryland Dental School, recently became a member of the Gorgas Society of the school. The Gorgas Society was formed in 1916 in honor of a former dean. Membership in the society is an honor granted in recognition of the high scholastic achievement of the student in the freshman and sophomore years. Invitations to membership are extended annually to the top 30 percent of the junior class. Robert Hilkene is the son of Mr. and Mrs. Henry P. Hilkene of 20 Carpenter Terrace. He was married last August to the former Leonora Golon of Belleville. The couple are now residing in Catonsville, Md. Mrs. Hilkene is also a Belleville High School graduate.

THE FINAL TOUCH
Face powder is a finishing film that puts the final touch on makeup that is based on skillful use of a foundation and rouge. It should complement your makeup base, not clash with it.

Sell - ur - Self and SAVE
ALUMINUM COMB. STORM WINDOWS \$1195 Inst. \$3.00 @
ALUMINUM COMB. STORM DOOR \$2295 Inst. \$12
JALOUSIE DOOR \$4795 Inst. \$15
KITCHEN REMODELING AND FORMICA TOPS
ALUMINUM SIDING 32c ft.
Never Paint Your House Again & Have The Beauty Of A Fresh Paint Job For A Lifetime.
We will Re-side your entire house with Aluminum Siding for the price of a paint job!
FREE PLAID STAMPS With All Purchases
FOR FREE ESTIMATE CALL North 7-6400

Dr. M. Roachvarg
OPTOMETRIST
Mon. & Fri. 9:30-7:30
Tues. & Thurs. 9:30-5:30
Closed Wednesdays
132 Washington Avenue
Belleville

Social And Club Roundup Local Girls Go Native On Hawaiian Vacation



Left, Miss Linda Marano

...right, Miss Pat. Del Grosso
Miss Linda Marano of 52 Mt. Pleasant Avenue and Miss Patricia Del Grosso of 71 Prospect Place recently returned from a three-week vacation, by jet, to Hawaii. Included in their itinerary were stops at San Francisco, Los Angeles, and Las Vegas.

St. Vincent's Academy, 226 West Market Street, Newark, sponsoring a Mission Bazaar at the school Tuesday evening, November 20, from 6:30 to midnight. Admission is free and everyone is welcome.

The Stork Club

Laurie Anne Nitti
Mr. and Mrs. Joseph Nitti of 131 Passaic Avenue are receiving congratulations on the arrival of their first child, a daughter, Laurie Anne, born October 8 at Clara Maass Memorial Hospital. Her birth weight was eight pounds, six ounces. Mrs. Nitti is the former Irene Zerbini daughter of Mr. and Mrs. Irving Zerbini of 98 Hill Moreland of 20 Hill Street, and side Avenue, Nutley. Mr. Nitti, son of Mr. and Mrs. Nitti of 89 King Street, Nutley, is a technical serviceman with the Pettit Paint Company.

Kim Anne Meola
Mr. and Mrs. Thomas E. Meola of 158 Montclair Avenue, Newark, are receiving congratulations on the arrival of their first child, a daughter, Kim Anne, born October 8 at Clara Maass Memorial Hospital. Her birth weight was seven pounds, one ounce. Mrs. Meola is the former Rose Anne Brienza daughter of Mr. and Mrs. Anthony Brienza of 4 Haledon, Mr. Meola, son of Mr. and Mrs. Nick Meola of 791 Summer Avenue, Newark, is employed by the National Mfg. Co., Inc. of Chatham.

PL 9-1497 EYES EXAMINED
Dr. M. Roachvarg
OPTOMETRIST
Mon. & Fri. 9:30-7:30
Tues. & Thurs. 9:30-5:30
Closed Wednesdays
132 Washington Avenue
Belleville

Custom Upholstering
Sofas Completely Rebuilt & Recovered from \$129.50
Living Room Chairs from \$ 59.50
Occasional Pieces from \$ 19.95
Custom made furniture also at Discount Prices
SLIP COVERS
3 Pieces - Sofa & 2 Chairs from \$ 79.50
Single Sofas from \$ 45.50
Single Chairs from \$ 25.00
KUFRIN
UPHOLSTERY SHOP
All work unconditionally guaranteed
472 Washington Ave. PL-9-7620

Miss Cafone Honored By Fiorente Club

At the November monthly meeting of the Women's Auxiliary of the Italian Fiorente Society, Miss Theresa Cafone of 9 King Street, Belleville, was honored by the performance of a program entitled "This Is Your Club Life." Patterned after the well-known TV show, the program was narrated by Connie Costabile, with layout and background information provided by Nancy Cancelliere. Miss Cafone has been an active and dedicated member of the Women's Auxiliary of the Italian Fiorente Society. She has held the office of corresponding secretary for two years; vice-president of one; and publicity chairman, as well as member on the Men's Committee, for four years. In recognition of her services, she was presented with a silver charm bracelet and with a scrapbook of her club life. Making the presentation was her niece, Judith Ann Servideo.

Special guests present at the meeting to honor Miss Cafone were Mrs. Dominick Cafone, Mrs. Frank Servideo, Mrs. Joseph Vitiello, Mrs. Helen Guerrero, Mrs. James Colino, Mrs. Mary Cooke and Miss Joyce Hunterdun. At the December meeting of the Society, a toy drive for the children of Vineland will be held. Members are reminded to bring old or new toys for this collection, which will be under the direction of Mrs. Jerry Guerrero, chairman.

Miss Diane Meola, daughter of Mr. and Mrs. Paul Meola of 66 Jamarrone Street, was recently feted at a "Sweet Sixteen" birthday party at Beppy's Restaurant, Newark. Approximately 50 guests attended from Belleville, Nutley, Newark and North Arlington.

Cheryl Ann McCabe

Mr. and Mrs. David McCabe of 20 Mount Pleasant Avenue are receiving congratulations on the arrival of their first child, a daughter, Cheryl Ann, born October 25 at Clara Maass Memorial Hospital. Her birth weight was six pounds, 15 ounces. Mrs. McCabe is the former Barbara Goodman, daughter of Mr. and Mrs. Joseph Goodman of 20 Mt. Pleasant Avenue, Mr. McCabe, son of Mr. and Mrs. Frank McCabe of Bloomfield, is presently stationed with the U. S. Army in Germany.

James Thomas Zalewski

A third child, James Thomas, was born October 16 in Clara Maass Memorial Hospital to Mr. and Mrs. Albert Zalewski of 19 Beech Street. The seven pound, six ounce youngster joins Albert, three, and Jean, two. Mrs. Zalewski is the former Margaret Roemer, daughter of Mr. and Mrs. Arthur Roemer of 18 Beech Street. Mr. Zalewski, son of Mr. and Mrs. B. A. Zalewski of 19 Beech Street, is a carpenter.

Martin Thomas King

A fourth child, Martin Thomas, was born October 16 in St. Mary's Hospital, Passaic, to Mr. and Mrs. Joseph King of 71 Preston Street. The eight pound, one ounce youngster joins Brian, seven, Cheryl, 5½, and Peggy, four. Mrs. King is the former Patricia Kiernan.

MAKEUP TIP

When applying makeup, use downward strokes. It smooths down facial fuzz and keeps it from standing up prominently.

Miss Virginia Paserchia Bride Of James Gillespie



MRS. JAMES GILLESPIE Former Virginia Paserchia

The marriage of Miss Virginia Paserchia, daughter of Mr. and Mrs. Dominick Paserchia of 281 North Belmont Avenue, to James Gillespie, son of Mr. and Mrs. William Gillespie of 54 La France Avenue, Bloomfield, was solemnized Sunday afternoon, November 11, in St. Anthony's R. C. Church.

The ceremony was performed by the Rev. Edward Scandone and a reception was held at the Continental Ballroom, Newark. Mr. Paserchia gave his daughter in marriage. She wore a long sleeved gown of silk peau de soie, fashioned with bell skirt and chapel train. The scoop neckline was embellished with appliques of lace. Her bouffant veil of illusion fell from a crystal tiara, and she carried white orchids and stephanotis.

Peter Ferick of Bloomfield was best man for Mr. Gillespie, and ushers were Morris Paserchia of Belleville and Harold Strazza of Belleville. Junior ushers were Dominick Paserchia, nephew of the bride, and Thomas Morley, nephew of the bridegroom.

The bride's mother wore a dress of blue silk peau de soie with matching accessories, while the bridegroom's mother chose white silk with a gold print. Both wore a white orchid.

The bride, a graduate of Belleville High School, is employed by Peerless Tube Co., Bloomfield. Mr. Gillespie attended Bloomfield High School, served four years in the U. S. Navy, and is employed at Sonny Boyd's Belleville. After a two-week wedding trip the couple will reside at 14 Second Street, Bloomfield.

Naturalizer.
THE SHOE WITH THE BEAUTIFUL FIT
A glove-soft leather lightly textured for a new look, unlined for a new feel
The heel is just right for walking-substantial and smart
The sole is cushioned with soft air-foam as another Naturalizer comfort feature
14.99
TANNEN'S SHOE SHOP
141 Washington Avenue Belleville, N. J.
PL 9-6548 - Open Friday 7-9 P.M.

Bellboys Are Heavy Favorites To Win On Thanksgiving Day

The Bellboys of Belleville High School are heavy favorites, especially after their tremendous victory over Nutley to bring home the turkey on Thanksgiving Day when they journey to Orange for their final game of the season.

Belleville, with its wide open offense and superlative defense, will make the Orange grinders wish they had stayed home and enjoyed their turkey. In fact, after an hour of coping with Luzzi, Latore, and company, the men from Orange will be convinced that the turkey enjoyed the day much more than they did.

Offensively, the Testamen, have been superlative all season. They are averaging more than 26 points per game, most of which have been scored by Rich Luzzi, who is sure to be taken into consideration when the All-Exsex team is chosen at the end of the season.

However, the key to Belleville's offense has been the magnificent play of Quarterback Joe Latore. It has been Latore's excellent faking, hand-offs and passing that have provided Belleville with the necessary balance needed for success. Latore is also a certainty to be considered for the All-Exsex team.

The Orange team has not enjoyed a particularly successful season and has a better than adequate offense, although it can not compare favorably to the Belleville machine. The Orange offense has been relatively low-scoring this year, being unable to penetrate defenses that Belleville utterly destroyed.

Defensively, Belleville is excellent by none. The Bellboys have a defense that can compare to any in the county, if not

the entire state. They have stopped powerful ground games such as Garfield's, and put shame to highly respected aerial attacks. The defensive unit has allowed only eight touchdowns in their first seven games, with all of the scores coming in the first three. The average score for an opponent is 7 points per game.

It is evident that the men from Orange will not be a match for the Bellboys and the only question is whether they will be able to keep the score respectable. It is this reporter's guess that they will not. The highly powered Bellboy offense will finish one of their finest seasons by crushing the Orange team. If the Bellboys have a bad day and the Orange team plays a good game the score might be as close as 20-0, but if Belleville is on, the score could go as high as 85-0. One way or the other, Orange High School should be thankful if they get away from the field alive. Their goose is cooked or should we say their "turkey".

Chets And Lions Club Are Recreation Grid Champs

In the Recreation Heavyweight Football League a great Chets team finished undefeated and undefeated. Federal Industries, the year's runner-up, bowed to Chets in the last game of the season 14-7. This game was no push-over for Chets but rather it was a game where every yard was won with a battle.

Chets scored first in the early stages of the game on a 40-yard end sweep, making the extra point on a line plunge. Federal tightened up its defenses and held Chets to the 7-0 score through most of the first half. Late in the second quarter Chets scored its second touchdown and point as the result of a blocked punt, to raise the score to 14-0. Federal Industries lashed back for its only touchdown in the third quarter on short runs by its fullback. Defensively, Federal Industries pressed late but Chets held to be the 1963 Recreation Heavyweight Champs.

The Lions Club, in the lightweight league, closed its season with a do or die win over Kiwanis Club. This win gave the Lions Club the Championship with a record of 5 wins and 1 loss.

FINAL STANDINGS HEAVYWEIGHTS				
Teams	W	L	T	Pts.
Chets	6	0	0	12
Fed. Industries	4	2	0	8
Amer. Legion	2	4	0	4
Jolly Cleaners	0	6	0	0

LIGHTWEIGHTS				
Teams	W	L	T	Pts.
Lions Club	5	1	0	10
Kiwanis Club	2	1	3	7
Varsity Club	1	2	3	4
Elks Club	0	4	2	2

Superintendent of Recreation Robert E. Cook thanked the coaches and sponsors for their part in making the Recreation Leagues possible.

Barbershop Five Clip Opposition In League Play

Michael's Barber Shop won the odd game from Larider Drugs to lead the Nutley Merchants Bowling League by one game Friday night. Stanley's Tavern won two games from D'Ambola Electric to take third place, while Zincola's Bakers won three games from Custom Mattress Makers for the only three game win of the night.

Pete Barlett of Pete & Nick's Amoco rolled high game of the night with a 255 game and had a 846 series. James Capabro rolling for Gem Construction had 631. Caesar Casate of Nubel Plumbing & Heating had 618. Nubel pinned a high series of 831.

Porcella Jewelers Tops Olympic Majors

Porcella's Jewelers of Bloomfield took over first place in Belleville's Twin Major League at The Olympic Bowl by taking 2 1/2 games from fading Binky's Tavern. Proprietor Al Porcella led his team with a 235-325 set. Earl Haught rolled a 905 series in a losing cause for the losers. The Jewelers now have the record of 3-1-1-1-1.

Three other teams remained close to the top by closing out their evening's work with a 21-12 record. The team with the 21-12 record, the Jewelers, was top man for the Plumbers with a steady set of games, 207, 223, 212-642. Kearny Lanes skipped over Basile's 2-1 with A. Carvahio leading the way with 247-627. Basile's top man were A. Basile 256-618 and V. Lamparillo 212-601. Ricca's won 2 close games over Muscara Music. B. Heims' 584 was tops for both squads.

Olympic Bowl defeated last place Andy's Sport Shop 3-0 behind A. Carrato (245-614) and Juliano's 596. Parkway House, behind Bob Powell (597), Whiteshall All Window Products, John Fusaro rolled 219-601 for the losers. Sunrise Diners won three games also, downing Masters with 219-601. B. Garry (565) were high for the Daistrymen.

Fourth place Local 410 topped Cerrato Plumbers 2-1. T. Levens' red hot bowling of 230, 246 and 190 for a 666 set and J. Armino's 224-618 led the way for the Local. John Santoro was top man for the Plumbers with a steady set of games, 207, 223, 212-642. Kearny Lanes skipped over Basile's 2-1 with A. Carvahio leading the way with 247-627. Basile's top man were A. Basile 256-618 and V. Lamparillo 212-601. Ricca's won 2 close games over Muscara Music. B. Heims' 584 was tops for both squads.

M. Dikkeboom Has Highest League Average

Here are the weekly standings and averages of the Friday Night Ladies Bowling League, as of November 9. The League bowls every Friday night at the Car-Nutley.

	W	L
McGregory's Tavern	20	10
The Lounge	18	12
La Nor's Beauty Salon	15	15
Belleville Lumber	15	15
Gallagher's Tavern	15	15
S. W. Brown, Mort.	14	16
Kohler's Sheet Metal	12	18
Bay's	11	19

INDIVIDUAL AVERAGES	
M. Dikkeboom	161
P. Narucki	160
M. Gorham	152
M. O'Neil	148
I. Hovsepian	147
C. Zamponi	145

Belleville Scouts Plan Their District Council

The annual meeting of the Belleville District, Robert Treat Council Boy Scouts of America, will be held Wednesday, December 5 at the Galaxy Restaurant at 6:30 p.m.

Members of Scout units will participate in ceremony and demonstrations and committee chairmen and district officers will make reports. Plans will also be outlined for next year and an election will be conducted.

Raymond Kinsley, who has been serving on the council's committee for den chief training conference, said Belleville district cubmasters and den chiefs will participate in the den chief conference Saturday, December 8 at Newark Academy from 10 to 4 p.m.

Reservations are to be made in advance with the Council office through each cubmaster.

Furniture Men Hold Annual Dinner-Dance At West Paterson

The annual dinner - dance sponsored by New Jersey Furniture Association and the Furniture Manufacturers representatives was held at Westmont Country Club, West Paterson, November 10, with over 350 in attendance.

Purpose of the annual affair, said president Richard D. Kastner, was to bring about a closer relationship between manufacturing, wholesale, and retail levels of the home furnishing industry.

Awards for outstanding statewide services were given to Morris Stoffer, W. B. Fursten, and Norman Warwick.

VIEW FROM THE SIDELINES

By RAY FERSKO

JOY REIGNS IN BELLEVILLE AS NUTLEY TOPPLES

As thousands of students raced out upon the field and the goal posts quickly were knocked down, Coach Testa was carried triumphantly off the field. For the first time in nine years, Belleville had done it: They had come up with a squad of hard nose, crisp football players who could defeat the arch rival, Nutley. In Saturday's contest the Bellboys scored more points than they have scored in the past ten years.

This is one game that Mr. Testa and his fine coaching staff can really be proud of. They did a great all around job of coaching and scouting.

In speaking with Coach Tom Testa all he could say was "It was very beautiful and the boys were superlative both offensively and defensively."

From "the sidelines" one could easily see that the team was fundamentally crisp. Nutley was big but Belleville proved that size is only in the mind. This was one game in which Coach Testa's philosophy of "determination and spirit being 90 per cent of the battle" was shown.

An excellent game was played by the whole squad. Tom Greco and Richie Luzzi, who averaged 7.6 yards per carry, were superb. In the first half an excellent job of all around play was shown by quarterback Joe Latore, who suffered a minor injury in the second quarter. In the second half, young substitute quarterback Frank Pomaco came in and outstandingly took command. Belleville fans should be hearing quite a bit about him next year.

Chmura, Collier Lead Suburban Woman's League

Once again, behind the steady bowling of Mary Chmura (509) and Jean Collier (532), Le Fior Beauty outpinned Garlock Liquors for three games and increased their lead league to two and a half games.

Despite Peg Smith's 202-509, her Le Monta team dropped two games to the Jetties. The remaining teams stayed in a close battle with Brook Gift taking two from Menck's Market. Statmore's won over Kavanagh's and Brookdale Beverages took two from Prudential.

Tulane Ice Cream took two over Betsy Ross Beauty, and Allwood Pharmacy took the odd game from Costa's Delicatessen.

OLYMPIC BOWL

NOW OPEN
NEW MODERN
BILLIARD ROOM

Always Open Bowling At Olympic

BRING THE FAMILY FOR THE EVENING

679 Washington Ave., Belleville Phone PL 1-2111



TURKEY

PUMPKIN PIE

CALLING THE FOLKS

...all part of the Thanksgiving tradition
A family visit by phone is the next best thing to being there. And it's so inexpensive—especially with low, holiday rates in effect all day Thanksgiving. NEW JERSEY BELL

An excellent job was also done by Soph. Frank Raimo who took Joe Cervasio's place as right defensive half back. Joe is out for the remainder of the season due to a slight crack in one bone in his hand. He played very good ball this year and still has two more years to spend with the Bellboys.

In summation it was a fine game and one that could not have been won without the fine impregnable defense and the hard hitting, romping offense. As anyone could see, this was a big win and one that may mean a group IV state championship.

On Thursday, the Bellboys will play their annual Thanksgiving Day game with Orange High School in Bell Stadium, Orange, at 11 a.m. Orange is a good team. They're fast and shifty. Led by returning lettermen Ron Armstrong and Bobbie Jones, the Tornadoes are mainly a running threat. They work from a spread formation. They occasionally vary their attack by taking to the air and shooting around ends. The Bellboys will have to check the Tornadoes ends through and the secondary also will have to be on their toes.

It is my opinion that Orange's defense will not be able to stop the fine passing of Latore nor the running of Luzzi and Senesky. Furthermore, I feel they will have to really work hard when they go against the strong rarely scored upon Bellboy defense. Nevertheless, Belleville must be alert. I predict Belleville 20-0.

NOV. 28 BASKETBALL CLINIC AT 8 P.M. FOR ALL SCHOOL CHILDREN IN BELLEVILLE

Since November 1, the Belleville High School Basketball squad, under the direction of head coach Al Lobbo and his assistants Charles Travers and Nick Petty, has begun practice. The squad, which started with 59 boys; not counting the football players, whose season ends Thanksgiving, has already been cut down to 19. Right now the team is working very hard on conditioning and skill drills. After Thanksgiving the final cut will be made. Presently Coach Lobbo is optimistic, but he says it will take another two weeks until he can really gain a true insight of the squad's potential.

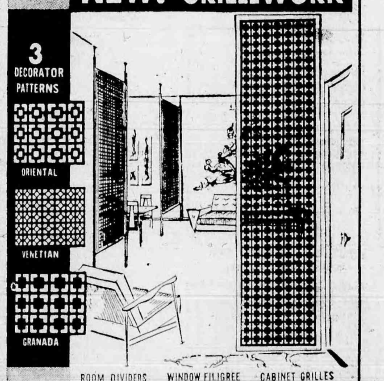
California and Florida Specialists If You Must Move - Let Us Move You



JOS. RAASER
Moving And Storage Warehousing
Owned and Operated by
ROBERT DUKIN
Expert Trained Personnel on All Jobs

All Types Moving Shipping Packing Crating
Across The Street or Across The Country
Free Estimates With No Obligation
PL 9-1822
494 CORTLANDT ST. BELLEVILLE

NEW! DO-IT YOURSELF GRILLEWORK



PANELAIRE

Choice of convenient sizes.
Framing and other accessories.
Plenty of Free Parking
Complete Line Of Building Materials

Complete 26" x 96" Room Divider \$16.80
Complete 18" x 74" Screen Panel \$25.00

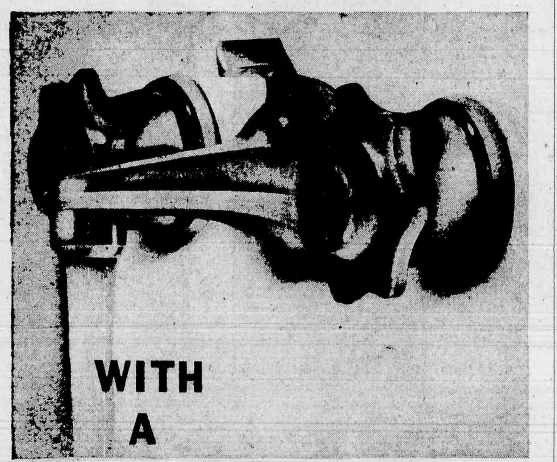
Distributed By:
VIOLA BROTHERS
180 WASHINGTON AVE. NUTLEY
Call North 7-7000

No matter what you've been offered

LEARNARD
CHEVROLET
WILL BETTER THE DEAL!
SEE US TODAY

514 Washington Ave., BELLEVILLE
Open Evenings, Wed. 'til 6. Closed Sundays—PL 9-4200

ALWAYS LOTS OF HOT WATER

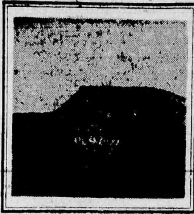


GAS WATER HEATER

... and at every other faucet in the house — because hot water is supplied by the right size automatic gas water heater! An automatic gas water heater guarantees you hot water 24 hours a day ... but to be sure you have enough for the whole family, choose a gas water heater that's big enough! Average families need at least 40-gallon gas water heaters!

PUBLIC SERVICE ELECTRIC AND GAS COMPANY
A DIVISION OF THE PUBLIC SERVICE GROUP

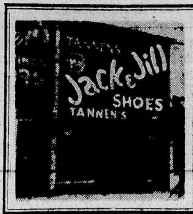
Belleville Cab
FL 9-3000



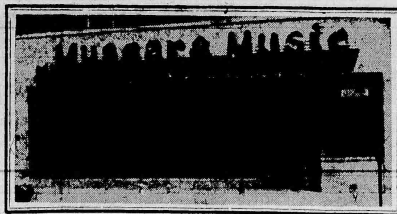
Royal Shop-Rite
169 Washington Ave.



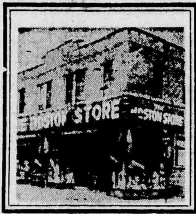
Tannen's Shoe Shop
141 Washington Ave.



Muscara Music Co.
814 Washington Ave.



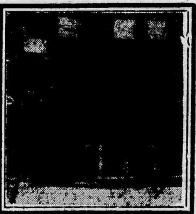
Jannarone's Shell Station
842 Washington Ave.



The Boston Store
538-540 Washington Ave.



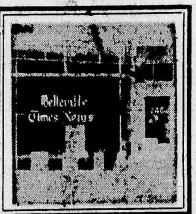
Vee Bee Esso
Franklin Ave. cor. Joralemon



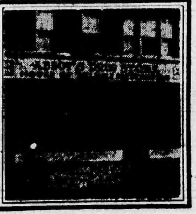
The Crescent Press
126 Washington Ave.



Christian's Restaurant
751 Washington Ave.



Belleville Times-News
246 Washington Ave.



Abbot's Drug Store
251 Washington Ave.



Mary's Alteration Shop
253 Washington Ave.

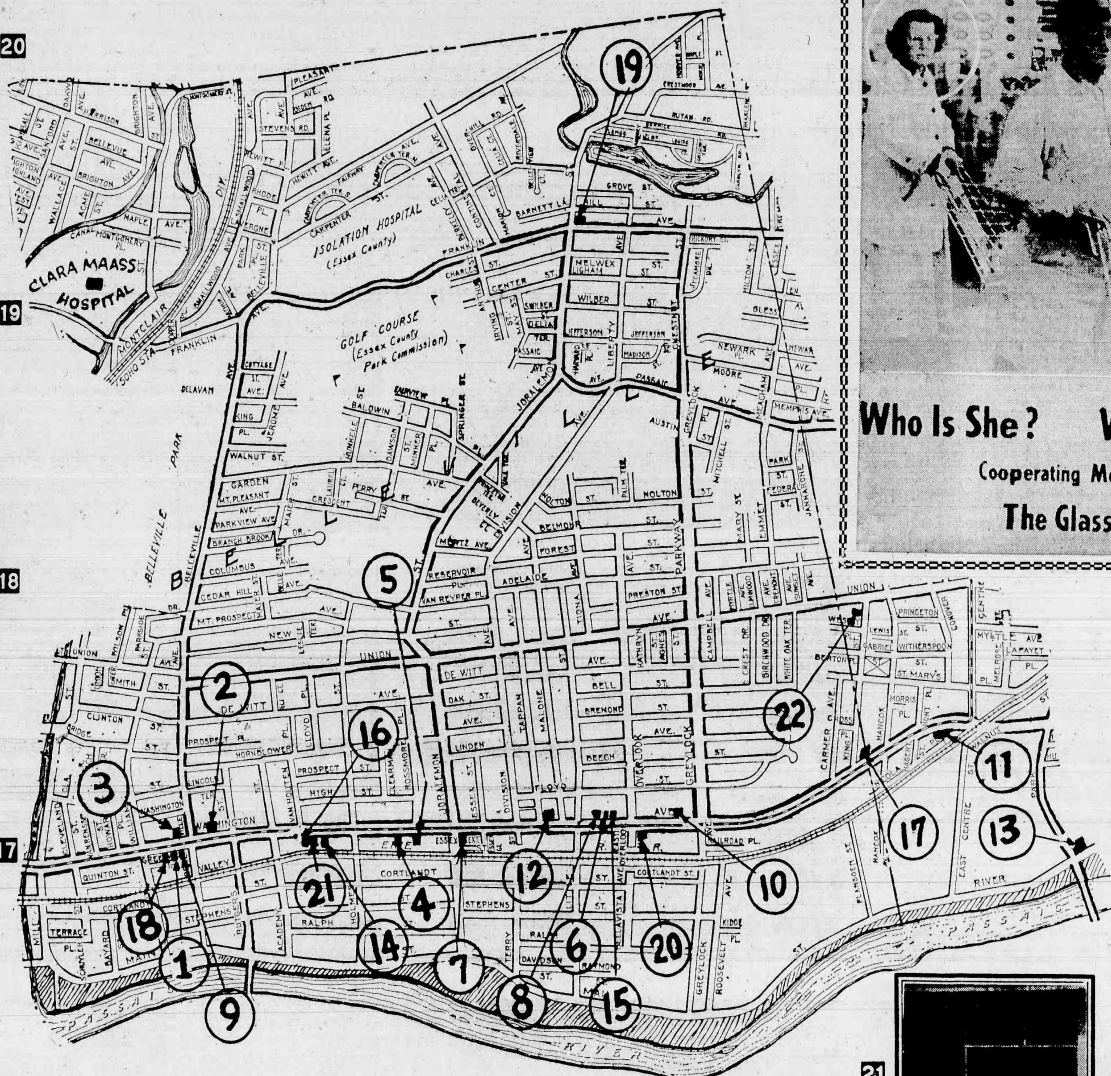
1

2

3

4

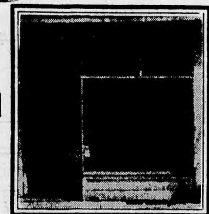
5



- | | | | |
|----------------------------|------------------------------|----------------------------|------------------------------|
| Alterations | 14—MARY'S ALTERATION SHOP | Newspaper | 16—BELLEVILLE TIMES-NEWS |
| Automobiles | 11—BELLEVILLE-NUTLEY BUICK | Optician | 8—WILLIAM C. SMITH |
| | 5—MEAD-FORD | Restaurant | 17—CHRISTIAN'S RESTAURANT |
| Bakery | 7—GOECKELER'S QUALITY BAKERY | | 6—JOHN'S RESTAURANT |
| | 12—ZINICOLA'S BAKERY | Savings & Loan Assn. | 12—DE WITT SAVINGS & LOAN |
| Diner | 15—STEFANO'S DINER | Service Stations | 18—VEE BEE ESSO |
| Department Stores | 20—THE BOSTON STORE | Stations | 18—THE CRESCENT PRESS |
| Drugs | 15—ABBOTT'S DRUG STORE | Taxi Cab | 1—BELLEVILLE CAB |
| Foods | 1—ROYAL SHOP-RITE | Towing Service | 5—JANNARONE'S SHELL STATION |
| Footwear - Men's - Women's | 3—TANNEN'S SHOE SHOP | Travel Bureau | 21—BELLEVILLE TRAVEL SERVICE |
| Music | 4—MUSCARA MUSIC CO. | Wallpaper - Paints - Glass | 10—THE GLASS CO. |



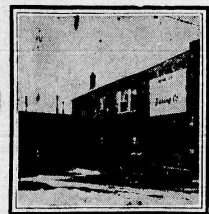
John's Restaurant
529 Washington Ave.



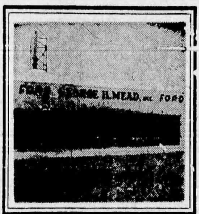
Belleville Travel Service
246 Washington Ave.



Goekeler's Quality Bakery
Washington Ave. cor. Joralemon



Zinicola's Bakery
King St. nr. Union Ave., Nutley



Mead - Ford
515 Washington Ave.



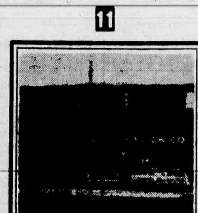
Mary's Alteration Shop
253 Washington Ave.



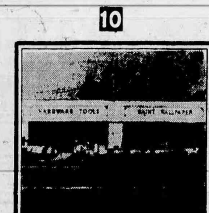
Stefano's Diner
Park Ave. & River Rd., Nutley



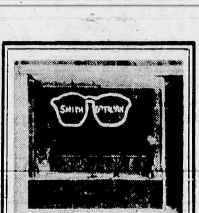
De Witt Savings & Loan
463 Washington Ave.



Belleville-Nutley Buick
64 Washington Ave.

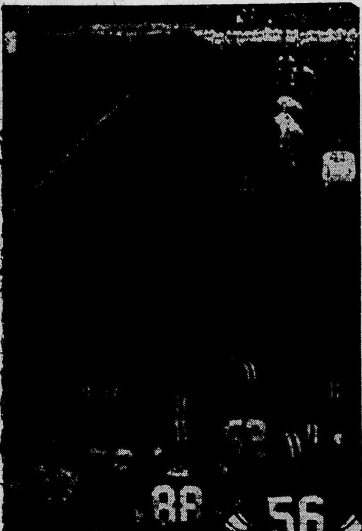


The Glass Co.
555 Washington Ave.

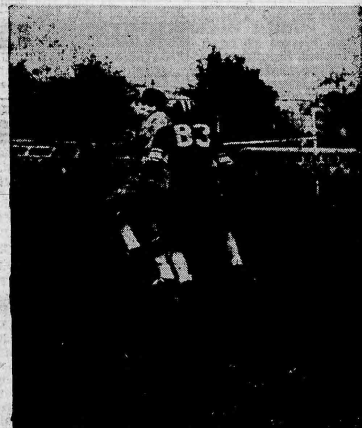


Wm. C. Smith, Optician
140 Washington Ave.

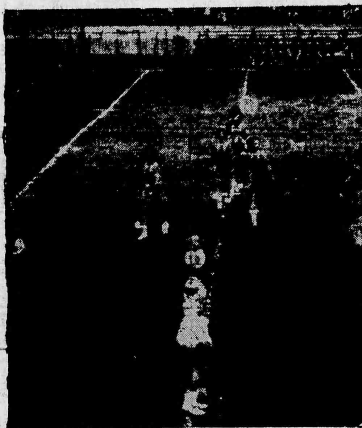
FOOTBALL ACTION PICTURES!



The kick-off as Belleville (far side) and Nutley (dark Jerseys) watch.



Patrick Keating blocks pass attempt.



And the girls whoop it up at half-time.



Luzzi, Belleville's best, gains 6 yards past Di Girolamo



Tom Greco racks up a first-and-ten.



Senesky is downed by Pietoso; Vecchio at right.



Luzzi through center as Bencivenni, Ennis, and Di Girolamo close in.



A fumble by Senesky as Tomaszewski blocks Pietoso.



Through the middle by Lembo; but no first down.



Pietoso follows blocker Lembo, but was downed by Orsini and Coglia at rear.



Luzzi again before Maurillo takes him down. Pietoso and DellaLuna assist.



Greco around his own right end for first-and-ten.



And a last first down by Greco with a 22-yard run

Photos

By David Wolk

IF YOU
WANT
TO...

BUY, SELL, TRADE, RENT, HIRE, HELP

CALL PL 9-3200
TO PLACE YOUR CLASSIFIED

CLASSIFIED ADVERTISING

Adv. will appear in The Nutley Sun and
Belleville Times-News

Over 56,000 Readers

25 WORDS OR LESS
Each Additional Word 8c

1.75

25 WORDS OR LESS THREE TIMES
Each Additional Word 16c

4.00

Annual Rate 1.25 Per Week

Ads Must Be In By 12 Noon Monday

AGRICULTURE

SCREENED TOP SOIL - FILL
Backyard, landscaping, sod-
ding, lawn clearing. Let us solve
your drainage problem. Trench-
er, bulldozer, and truck rental.
Armando Vocaturo - telephone
Plymouth 9-6640.

AWNINGS

ALUMINUM AWNINGS - Patio
covers, door hoods, new roll-
up awnings with sides. Anodized
aluminum railings. U. S. All
Weather Products Co., 217 Belle-
ville Avenue, Belleville, Plym-
outh 9-1863.

3-6-58 TF

AAI-SCREENED TOP SOIL
from nearby farms. Bushel,
yard or load. Also fill dirt. E.
Muller, telephone North 7-3084,
after 5 p.m. weekdays; anytime
weekends.

3-22-62TF

ALUMINUM
SIDING

IPPOLEITO CONSTRUCTION -
Aluminum siding, awnings, and
windows. Also stone fronts. Guar-
anteed work, fair prices. Tele-
phone North 7-3444 for free esti-
mate.

4-6-61 TF

WE SPECIALIZE in Aluminum
siding, aluminum awnings, win-
dows, doors, Jalousies, porch
enclosures, kitchen remodeling
and home improvements. A. I.
Work Guaranteed. Glen - Nutley
Aluminum Products, Inc., North
7-2428.

3-22-62TF

ALUMINUM
REPAIRS

ALUMINUM GLASS and screens
repaired; also headquarters for
saddles, door closers, window
chains, knob sets, grilles, etc.
KING OF BELLEVILLE, 164
Washington Ave., Belleville,
PL 9-2181.

1-21-60TF

ALL TYPE ALUMINUM RE-
PAIRS - L.O.F. glass and Al-
quid streamlining. Work done by
qualified glazier mechanics.
U. S. All Weather Products Co.,
217 Belleville Avenue, Belleville,
Plymouth 9-1863.

1-16-62 TF

ALUMINUM
WINDOWS

NEW ALUMINUM
STORM WINDOWS
specially priced. Nutley Key and
Glass, 483 Franklin Avenue, Nut-
ley, Call North 7-5405.

2-8-62 TF

T.R. DAKES - Heavy duty
at aluminum welded storm windows,
guaranteed - factory to you.
Normal sizes \$14.95, including in-
stallation. Also gutters, leaders,
Painting. Demonstrations cheer-
fully given. North 7-2564 before
6:45 a.m. or evenings. 3-15-62TF

2-15-62 TF

Announcement

ATTENTION! For that new look
in clothes, call **P.L.A.Z.A.**
FRENCH CLEANERS, 250 Cen-
tre Street, North 7-2105. Same
Day Service. Free Mohndrooping.

2-8-62 TF

PERMANENTLY REMOVE UN-
WANTED HAIR BY ELECTRO-
LYSIS. Call for complimentary
treatment, Miss Berian, 623
Mt. Prospect Avenue, Newark.
Buses No. 28 and No. 27 at door.
Call MUmboldt 5-4305.

11-20-62

CHRISTMAS SPECIALS
NUTLEY - Beautiful page history of your
town. \$6.00. A beautifully printed
poem about Nutley, 25c or 15c.
Both available at Peerless Sta-
tionery.

12-27

AUTO
SERVICE

C.O.L.I.S.T.O.N SPECIALISTS
STRAIGHTENING, PAINT-
ING, lacquer, enamel, lucite. El-
ectro welding, chassis work. Al-
so glass work. **AL'S RIVER-**
SIDE, 221 Valley & FENDER
BROOKS, 221 Valley Street, Bel-
leville. PL 9-1182.

12-17-59 TF

AWNINGS

Custom-Made Window Shades
- Aluminum Products
- Venetian Blinds
- Canvas Awnings
- LEPREE - Awnings
524 Franklin Ave. North 7-7431

4-6-61 TF

BROOKLINE DECORATORS
Interior and exterior painting.
Paperhanging and repairs. Call
Plymouth 1-1448 after 4:30 p.m.

11-29

PAINTING AND PAPERHANG-
ING - Inside and outside work.
Carpentry, light plaster and cab-
inet work - all odd jobs. Call
North 7-5519.

4-26-62 TF

PAINTING AND PAPERHANG-
ING - Inside and outside work.
Carpentry, light plaster and cab-
inet work - all odd jobs. Call
North 7-5519.

4-26-62 TF

PAINTING AND PAPERHANG-
ING - Inside and outside work.
Carpentry, light plaster and cab-
inet work - all odd jobs. Call
North 7-5519.

4-26-62 TF

PAINTING AND PAPERHANG-
ING - Inside and outside work.
Carpentry, light plaster and cab-
inet work - all odd jobs. Call
North 7-5519.

4-26-62 TF

PAINTING AND PAPERHANG-
ING - Inside and outside work.
Carpentry, light plaster and cab-
inet work - all odd jobs. Call
North 7-5519.

4-26-62 TF

DECORATORS-PAINTERS

PAINTING AND ROOFING -
Gutters, leaders, block ceilings.
Quality work. Reasonable prices.
30 years experience. Fully in-
sured. Only the best materials
used. Sweeney & Son, Plymouth
9-9585.

IRVING ZUCKER
Painting/Decorating
Serving Nutley
Since 1929
North 7-8349

11-15

INTERIOR AND EXTERIOR
PAINTING by a reliable con-
tractor. Ceilings painted. Esti-
mates cheerfully given. Call Mr.
Whitaker, 680 Franklin Avenue
NO 7-6040.

8-25-60TF

PAINTING by a reliable con-
tractor. Ceilings painted. Esti-
mates cheerfully given. Call Mr.
Whitaker, 680 Franklin Avenue
NO 7-6040.

8-25-60TF

PAINTING by a reliable con-
tractor. Ceilings painted. Esti-
mates cheerfully given. Call Mr.
Whitaker, 680 Franklin Avenue
NO 7-6040.

8-25-60TF

PAINTING by a reliable con-
tractor. Ceilings painted. Esti-
mates cheerfully given. Call Mr.
Whitaker, 680 Franklin Avenue
NO 7-6040.

8-25-60TF

PAINTING by a reliable con-
tractor. Ceilings painted. Esti-
mates cheerfully given. Call Mr.
Whitaker, 680 Franklin Avenue
NO 7-6040.

8-25-60TF

PAINTING by a reliable con-
tractor. Ceilings painted. Esti-
mates cheerfully given. Call Mr.
Whitaker, 680 Franklin Avenue
NO 7-6040.

8-25-60TF

PAINTING by a reliable con-
tractor. Ceilings painted. Esti-
mates cheerfully given. Call Mr.
Whitaker, 680 Franklin Avenue
NO 7-6040.

8-25-60TF

PAINTING by a reliable con-
tractor. Ceilings painted. Esti-
mates cheerfully given. Call Mr.
Whitaker, 680 Franklin Avenue
NO 7-6040.

8-25-60TF

PAINTING by a reliable con-
tractor. Ceilings painted. Esti-
mates cheerfully given. Call Mr.
Whitaker, 680 Franklin Avenue
NO 7-6040.

8-25-60TF

PAINTING by a reliable con-
tractor. Ceilings painted. Esti-
mates cheerfully given. Call Mr.
Whitaker, 680 Franklin Avenue
NO 7-6040.

8-25-60TF

PAINTING by a reliable con-
tractor. Ceilings painted. Esti-
mates cheerfully given. Call Mr.
Whitaker, 680 Franklin Avenue
NO 7-6040.

8-25-60TF

PAINTING by a reliable con-
tractor. Ceilings painted. Esti-
mates cheerfully given. Call Mr.
Whitaker, 680 Franklin Avenue
NO 7-6040.

8-25-60TF

PAINTING by a reliable con-
tractor. Ceilings painted. Esti-
mates cheerfully given. Call Mr.
Whitaker, 680 Franklin Avenue
NO 7-6040.

8-25-60TF

PAINTING by a reliable con-
tractor. Ceilings painted. Esti-
mates cheerfully given. Call Mr.
Whitaker, 680 Franklin Avenue
NO 7-6040.

8-25-60TF

PAINTING by a reliable con-
tractor. Ceilings painted. Esti-
mates cheerfully given. Call Mr.
Whitaker, 680 Franklin Avenue
NO 7-6040.

8-25-60TF

PAINTING by a reliable con-
tractor. Ceilings painted. Esti-
mates cheerfully given. Call Mr.
Whitaker, 680 Franklin Avenue
NO 7-6040.

8-25-60TF

PAINTING by a reliable con-
tractor. Ceilings painted. Esti-
mates cheerfully given. Call Mr.
Whitaker, 680 Franklin Avenue
NO 7-6040.

8-25-60TF

PAINTING by a reliable con-
tractor. Ceilings painted. Esti-
mates cheerfully given. Call Mr.
Whitaker, 680 Franklin Avenue
NO 7-6040.

8-25-60TF

PAINTING by a reliable con-
tractor. Ceilings painted. Esti-
mates cheerfully given. Call Mr.
Whitaker, 680 Franklin Avenue
NO 7-6040.

8-25-60TF

PAINTING by a reliable con-
tractor. Ceilings painted. Esti-
mates cheerfully given. Call Mr.
Whitaker, 680 Franklin Avenue
NO 7-6040.

8-25-60TF

PAINTING by a reliable con-
tractor. Ceilings painted. Esti-
mates cheerfully given. Call Mr.
Whitaker, 680 Franklin Avenue
NO 7-6040.

8-25-60TF

PAINTING by a reliable con-
tractor. Ceilings painted. Esti-
mates cheerfully given. Call Mr.
Whitaker, 680 Franklin Avenue
NO 7-6040.

8-25-60TF

PAINTING by a reliable con-
tractor. Ceilings painted. Esti-
mates cheerfully given. Call Mr.
Whitaker, 680 Franklin Avenue
NO 7-6040.

8-25-60TF

PAINTING by a reliable con-
tractor. Ceilings painted. Esti-
mates cheerfully given. Call Mr.
Whitaker, 680 Franklin Avenue
NO 7-6040.

8-25-60TF

PAINTING by a reliable con-
tractor. Ceilings painted. Esti-
mates cheerfully given. Call Mr.
Whitaker, 680 Franklin Avenue
NO 7-6040.

8-25-60TF

PAINTING by a reliable con-
tractor. Ceilings painted. Esti-
mates cheerfully given. Call Mr.
Whitaker, 680 Franklin Avenue
NO 7-6040.

8-25-60TF

PAINTING by a reliable con-
tractor. Ceilings painted. Esti-
mates cheerfully given. Call Mr.
Whitaker, 680 Franklin Avenue
NO 7-6040.

8-25-60TF

PAINTING by a reliable con-
tractor. Ceilings painted. Esti-
mates cheerfully given. Call Mr.
Whitaker, 680 Franklin Avenue
NO 7-6040.

8-25-60TF

PAINTING by a reliable con-
tractor. Ceilings painted. Esti-
mates cheerfully given. Call Mr.
Whitaker, 680 Franklin Avenue
NO 7-6040.

8-25-60TF

PAINTING by a reliable con-
tractor. Ceilings painted. Esti-
mates cheerfully given. Call Mr.
Whitaker, 680 Franklin Avenue
NO 7-6040.

8-25-60TF

PAINTING by a reliable con-
tractor. Ceilings painted. Esti-
mates cheerfully given. Call Mr.
Whitaker, 680 Franklin Avenue
NO 7-6040.

8-25-60TF

PAINTING by a reliable con-
tractor. Ceilings painted. Esti-
mates cheerfully given. Call Mr.
Whitaker, 680 Franklin Avenue
NO 7-6040.

8-25-60TF

PAINTING by a reliable con-
tractor. Ceilings painted. Esti-
mates cheerfully given. Call Mr.
Whitaker, 680 Franklin Avenue
NO 7-6040.

8-25-60TF

PAINTING by a reliable con-
tractor. Ceilings painted. Esti-
mates cheerfully given. Call Mr.
Whitaker, 680 Franklin Avenue
NO 7-6040.

8-25-60TF

PAINTING by a reliable con-
tractor. Ceilings painted. Esti-
mates cheerfully given. Call Mr.
Whitaker, 680 Franklin Avenue
NO 7-6040.

8-25-60TF

FOR SALE

ROOFING EQUIPMENT - All
brand new. Kettle, derrick, bu-
cks, mops. Call North 7-6800.

HELP WANTED

FEMALE
BE A JUDY LEE STYLIST -
Wear, sell and display our lov-
ely jewelry. Earn \$10-18 per eve-
ning. North 7-5821.

LAWN MOWERS

THE FINEST IN SNOW THRO-
WERS. ERS. ESKA Moto Mower and
Simplicity. Repairs on all makes.
Winter plans in effect. Agents for
Briggs & Stratton, Lawson and
Power Products engines.
MOWER MART
508 Washington Ave., Belleville
PL 1-0085

TABLE CLOTHS - 90" round
lace, nylon and cotton. \$13.90.
Also large unusual cloths for ho-
liday dining. \$8.95 and up. Es-
presso coffee pots, \$8.93; many
styles. Filomena's Gifts, 196
Chestnut Street, Nutley, North
7-4491.

GIRLS! GIRLS! GIRLS!
Holidays are Coming!
Holidays Demand
More Spending!
Office Workers
Register One Time Only for
our temporary Jones Girls Jobs!
These Earnings (no fee charged)
Will Really Help! Good Rates.
Local Positions. Convenient
Hours.

AGENTS FOR
Briggs & Stratton,
Clinton, Lawton
Power Products
Complete Parts department
HAND & POWER MOWERS
Sharpened and adjusted
All Work Guaranteed
NUTLEY KEY & GLASS
483 Franklin Ave. NO 7-5405
2-8-62 TF

THREE PIECE LIVING ROOM
SET, Louis XIV, richly carved
frames. In excellent condition.
To see call North 7-3022.

THE JONES GIRLS
Division of Dee of Kearny
232 Belleville Turnpike
Wyman 1-9080

SKATES-MOWERS - SAWS
SNOW BLOWERS
SALES-SERVICE
Power Tools Repaired
AUTHORIZED SERVICE
Briggs & Stratton
Lauson - Power Products
Lawn Boy
COMMUNITY TOOL REPAIR
39 Franklin Avenue
Nutley - MOWERS 7-1904
2-8-61 TF

TEN PIECE WALNUT DINING
ROOM set, table, 6 chairs, chin-
a cabinet, buffet and service
cabinet. In good condition. Rea-
sonable. Call North 7-5195.

WOMEN, EARN \$50.00 per week
at home. New '63 Digest tells
how. Send \$1. Princess Pat, 1472
Broadway, Suite 904, New York
36, N.Y.

SKATES-MOWERS - SAWS
SNOW BLOWERS
SALES-SERVICE
Power Tools Repaired
AUTHORIZED SERVICE
Briggs & Stratton
Lauson - Power Products
Lawn Boy
COMMUNITY TOOL REPAIR
39 Franklin Avenue
Nutley - MOWERS 7-1904
2-8-61 TF

STAINLESS STEEL PLATTER,
14 1/2", \$5.95, and 20 piece white
translucent china set, service for
4 - \$18.95. Both bargains. Filo-
mena's Gifts, 196 Chestnut Street,
Nutley, North 7-4491.

HOUSEWORKER - permanent,
for Saturdays. Business couple.
Call Plymouth 9-5901, evenings.

SKATES-MOWERS - SAWS
SNOW BLOWERS
SALES-SERVICE
Power Tools Repaired
AUTHORIZED SERVICE
Briggs & Stratton
Lauson - Power Products
Lawn Boy
COMMUNITY TOOL REPAIR
39 Franklin Avenue
Nutley - MOWERS 7-1904
2-8-61 TF

FOR RENT
3 1/2 ROOMS, new garden apart-
ment, Passaic Avenue, Nutley.
\$12. Includes heat and gas. Call
661-1883.

REAL ESTATE
BUY SELL OR TRADE Invest-
gate our trade - in place. We
will list your house for sale or
consider buying it, if you pur-
chase another house through our
office. Let us know your require-
ments. Evenings and Holidays
call Mrs. Kelly WE 9-3922.

SKATES-MOWERS - SAWS
SNOW BLOWERS
SALES-SERVICE
Power Tools Repaired
AUTHORIZED SERVICE
Briggs & Stratton
Lauson - Power Products
Lawn Boy
COMMUNITY TOOL REPAIR
39 Franklin Avenue
Nutley - MOWERS 7-1904
2-8-61 TF

FOR SALE
If you can't find what you
want in a classified section,
please turn to the "map
page" directory.

REAL ESTATE
BUY SELL OR TRADE Invest-
gate our trade - in place. We
will list your house for sale or
consider buying it, if you pur-
chase another house through our
office. Let us know your require-
ments. Evenings and Holidays
call Mrs. Kelly WE 9-3922.

SKATES-MOWERS - SAWS
SNOW BLOWERS
SALES-SERVICE
Power Tools Repaired
AUTHORIZED SERVICE
Briggs & Stratton
Lauson - Power Products
Lawn Boy
COMMUNITY TOOL REPAIR
39 Franklin Avenue
Nutley - MOWERS 7-1904
2-8-61 TF

FOR SALE
If you can't find what you
want in a classified section,
please turn to the "map
page" directory.

REAL ESTATE
BUY SELL OR TRADE Invest-
gate our trade - in place. We
will list your house for sale or
consider buying it, if you pur-
chase another house through our
office. Let us know your require-
ments. Evenings and Holidays
call Mrs. Kelly WE 9-3922.

SKATES-MOWERS - SAWS
SNOW BLOWERS
SALES-SERVICE<

RUG CLEANING - 9 to 12 domestic, \$8.45; 13 to 18 domestic, \$10.45; 19 to 24 domestic, \$12.45; 25 to 30 domestic, \$14.45; 31 to 36 domestic, \$16.45; 37 to 42 domestic, \$18.45; 43 to 48 domestic, \$20.45; 49 to 54 domestic, \$22.45; 55 to 60 domestic, \$24.45; 61 to 66 domestic, \$26.45; 67 to 72 domestic, \$28.45; 73 to 78 domestic, \$30.45; 79 to 84 domestic, \$32.45; 85 to 90 domestic, \$34.45; 91 to 96 domestic, \$36.45; 97 to 102 domestic, \$38.45; 103 to 108 domestic, \$40.45; 109 to 114 domestic, \$42.45; 115 to 120 domestic, \$44.45; 121 to 126 domestic, \$46.45; 127 to 132 domestic, \$48.45; 133 to 138 domestic, \$50.45; 139 to 144 domestic, \$52.45; 145 to 150 domestic, \$54.45; 151 to 156 domestic, \$56.45; 157 to 162 domestic, \$58.45; 163 to 168 domestic, \$60.45; 169 to 174 domestic, \$62.45; 175 to 180 domestic, \$64.45; 181 to 186 domestic, \$66.45; 187 to 192 domestic, \$68.45; 193 to 198 domestic, \$70.45; 199 to 204 domestic, \$72.45; 205 to 210 domestic, \$74.45; 211 to 216 domestic, \$76.45; 217 to 222 domestic, \$78.45; 223 to 228 domestic, \$80.45; 229 to 234 domestic, \$82.45; 235 to 240 domestic, \$84.45; 241 to 246 domestic, \$86.45; 247 to 252 domestic, \$88.45; 253 to 258 domestic, \$90.45; 259 to 264 domestic, \$92.45; 265 to 270 domestic, \$94.45; 271 to 276 domestic, \$96.45; 277 to 282 domestic, \$98.45; 283 to 288 domestic, \$100.45; 289 to 294 domestic, \$102.45; 295 to 300 domestic, \$104.45; 301 to 306 domestic, \$106.45; 307 to 312 domestic, \$108.45; 313 to 318 domestic, \$110.45; 319 to 324 domestic, \$112.45; 325 to 330 domestic, \$114.45; 331 to 336 domestic, \$116.45; 337 to 342 domestic, \$118.45; 343 to 348 domestic, \$120.45; 349 to 354 domestic, \$122.45; 355 to 360 domestic, \$124.45; 361 to 366 domestic, \$126.45; 367 to 372 domestic, \$128.45; 373 to 378 domestic, \$130.45; 379 to 384 domestic, \$132.45; 385 to 390 domestic, \$134.45; 391 to 396 domestic, \$136.45; 397 to 402 domestic, \$138.45; 403 to 408 domestic, \$140.45; 409 to 414 domestic, \$142.45; 415 to 420 domestic, \$144.45; 421 to 426 domestic, \$146.45; 427 to 432 domestic, \$148.45; 433 to 438 domestic, \$150.45; 439 to 444 domestic, \$152.45; 445 to 450 domestic, \$154.45; 451 to 456 domestic, \$156.45; 457 to 462 domestic, \$158.45; 463 to 468 domestic, \$160.45; 469 to 474 domestic, \$162.45; 475 to 480 domestic, \$164.45; 481 to 486 domestic, \$166.45; 487 to 492 domestic, \$168.45; 493 to 498 domestic, \$170.45; 499 to 504 domestic, \$172.45; 505 to 510 domestic, \$174.45; 511 to 516 domestic, \$176.45; 517 to 522 domestic, \$178.45; 523 to 528 domestic, \$180.45; 529 to 534 domestic, \$182.45; 535 to 540 domestic, \$184.45; 541 to 546 domestic, \$186.45; 547 to 552 domestic, \$188.45; 553 to 558 domestic, \$190.45; 559 to 564 domestic, \$192.45; 565 to 570 domestic, \$194.45; 571 to 576 domestic, \$196.45; 577 to 582 domestic, \$198.45; 583 to 588 domestic, \$200.45; 589 to 594 domestic, \$202.45; 595 to 600 domestic, \$204.45; 601 to 606 domestic, \$206.45; 607 to 612 domestic, \$208.45; 613 to 618 domestic, \$210.45; 619 to 624 domestic, \$212.45; 625 to 630 domestic, \$214.45; 631 to 636 domestic, \$216.45; 637 to 642 domestic, \$218.45; 643 to 648 domestic, \$220.45; 649 to 654 domestic, \$222.45; 655 to 660 domestic, \$224.45; 661 to 666 domestic, \$226.45; 667 to 672 domestic, \$228.45; 673 to 678 domestic, \$230.45; 679 to 684 domestic, \$232.45; 685 to 690 domestic, \$234.45; 691 to 696 domestic, \$236.45; 697 to 702 domestic, \$238.45; 703 to 708 domestic, \$240.45; 709 to 714 domestic, \$242.45; 715 to 720 domestic, \$244.45; 721 to 726 domestic, \$246.45; 727 to 732 domestic, \$248.45; 733 to 738 domestic, \$250.45; 739 to 744 domestic, \$252.45; 745 to 750 domestic, \$254.45; 751 to 756 domestic, \$256.45; 757 to 762 domestic, \$258.45; 763 to 768 domestic, \$260.45; 769 to 774 domestic, \$262.45; 775 to 780 domestic, \$264.45; 781 to 786 domestic, \$266.45; 787 to 792 domestic, \$268.45; 793 to 798 domestic, \$270.45; 799 to 804 domestic, \$272.45; 805 to 810 domestic, \$274.45; 811 to 816 domestic, \$276.45; 817 to 822 domestic, \$278.45; 823 to 828 domestic, \$280.45; 829 to 834 domestic, \$282.45; 835 to 840 domestic, \$284.45; 841 to 846 domestic, \$286.45; 847 to 852 domestic, \$288.45; 853 to 858 domestic, \$290.45; 859 to 864 domestic, \$292.45; 865 to 870 domestic, \$294.45; 871 to 876 domestic, \$296.45; 877 to 882 domestic, \$298.45; 883 to 888 domestic, \$300.45; 889 to 894 domestic, \$302.45; 895 to 900 domestic, \$304.45; 901 to 906 domestic, \$306.45; 907 to 912 domestic, \$308.45; 913 to 918 domestic, \$310.45; 919 to 924 domestic, \$312.45; 925 to 930 domestic, \$314.45; 931 to 936 domestic, \$316.45; 937 to 942 domestic, \$318.45; 943 to 948 domestic, \$320.45; 949 to 954 domestic, \$322.45; 955 to 960 domestic, \$324.45; 961 to 966 domestic, \$326.45; 967 to 972 domestic, \$328.45; 973 to 978 domestic, \$330.45; 979 to 984 domestic, \$332.45; 985 to 990 domestic, \$334.45; 991 to 996 domestic, \$336.45; 997 to 1000 domestic, \$338.45; 1001 to 1006 domestic, \$340.45; 1007 to 1012 domestic, \$342.45; 1013 to 1018 domestic, \$344.45; 1019 to 1024 domestic, \$346.45; 1025 to 1030 domestic, \$348.45; 1031 to 1036 domestic, \$350.45; 1037 to 1042 domestic, \$352.45; 1043 to 1048 domestic, \$354.45; 1049 to 1054 domestic, \$356.45; 1055 to 1060 domestic, \$358.45; 1061 to 1066 domestic, \$360.45; 1067 to 1072 domestic, \$362.45; 1073 to 1078 domestic, \$364.45; 1079 to 1084 domestic, \$366.45; 1085 to 1090 domestic, \$368.45; 1091 to 1096 domestic, \$370.45; 1097 to 1102 domestic, \$372.45; 1103 to 1108 domestic, \$374.45; 1109 to 1114 domestic, \$376.45; 1115 to 1120 domestic, \$378.45; 1121 to 1126 domestic, \$380.45; 1127 to 1132 domestic, \$382.45; 1133 to 1138 domestic, \$384.45; 1139 to 1144 domestic, \$386.45; 1145 to 1150 domestic, \$388.45; 1151 to 1156 domestic, \$390.45; 1157 to 1162 domestic, \$392.45; 1163 to 1168 domestic, \$394.45; 1169 to 1174 domestic, \$396.45; 1175 to 1180 domestic, \$398.45; 1181 to 1186 domestic, \$400.45; 1187 to 1192 domestic, \$402.45; 1193 to 1198 domestic, \$404.45; 1199 to 1204 domestic, \$406.45; 1205 to 1210 domestic, \$408.45; 1211 to 1216 domestic, \$410.45; 1217 to 1222 domestic, \$412.45; 1223 to 1228 domestic, \$414.45; 1229 to 1234 domestic, \$416.45; 1235 to 1240 domestic, \$418.45; 1241 to 1246 domestic, \$420.45; 1247 to 1252 domestic, \$422.45; 1253 to 1258 domestic, \$424.45; 1259 to 1264 domestic, \$426.45; 1265 to 1270 domestic, \$428.45; 1271 to 1276 domestic, \$430.45; 1277 to 1282 domestic, \$432.45; 1283 to 1288 domestic, \$434.45; 1289 to 1294 domestic, \$436.45; 1295 to 1300 domestic, \$438.45; 1301 to 1306 domestic, \$440.45; 1307 to 1312 domestic, \$442.45; 1313 to 1318 domestic, \$444.45; 1319 to 1324 domestic, \$446.45; 1325 to 1330 domestic, \$448.45; 1331 to 1336 domestic, \$450.45; 1337 to 1342 domestic, \$452.45; 1343 to 1348 domestic, \$454.45; 1349 to 1354 domestic, \$456.45; 1355 to 1360 domestic, \$458.45; 1361 to 1366 domestic, \$460.45; 1367 to 1372 domestic, \$462.45; 1373 to 1378 domestic, \$464.45; 1379 to 1384 domestic, \$466.45; 1385 to 1390 domestic, \$468.45; 1391 to 1396 domestic, \$470.45; 1397 to 1402 domestic, \$472.45; 1403 to 1408 domestic, \$474.45; 1409 to 1414 domestic, \$476.45; 1415 to 1420 domestic, \$478.45; 1421 to 1426 domestic, \$480.45; 1427 to 1432 domestic, \$482.45; 1433 to 1438 domestic, \$484.45; 1439 to 1444 domestic, \$486.45; 1445 to 1450 domestic, \$488.45; 1451 to 1456 domestic, \$490.45; 1457 to 1462 domestic, \$492.45; 1463 to 1468 domestic, \$494.45; 1469 to 1474 domestic, \$496.45; 1475 to 1480 domestic, \$498.45; 1481 to 1486 domestic, \$500.45; 1487 to 1492 domestic, \$502.45; 1493 to 1498 domestic, \$504.45; 1499 to 1504 domestic, \$506.45; 1505 to 1510 domestic, \$508.45; 1511 to 1516 domestic, \$510.45; 1517 to 1522 domestic, \$512.45; 1523 to 1528 domestic, \$514.45; 1529 to 1534 domestic, \$516.45; 1535 to 1540 domestic, \$518.45; 1541 to 1546 domestic, \$520.45; 1547 to 1552 domestic, \$522.45; 1553 to 1558 domestic, \$524.45; 1559 to 1564 domestic, \$526.45; 1565 to 1570 domestic, \$528.45; 1571 to 1576 domestic, \$530.45; 1577 to 1582 domestic, \$532.45; 1583 to 1588 domestic, \$534.45; 1589 to 1594 domestic, \$536.45; 1595 to 1600 domestic, \$538.45; 1601 to 1606 domestic, \$540.45; 1607 to 1612 domestic, \$542.45; 1613 to 1618 domestic, \$544.45; 1619 to 1624 domestic, \$546.45; 1625 to 1630 domestic, \$548.45; 1631 to 1636 domestic, \$550.45; 1637 to 1642 domestic, \$552.45; 1643 to 1648 domestic, \$554.45; 1649 to 1654 domestic, \$556.45; 1655 to 1660 domestic, \$558.45; 1661 to 1666 domestic, \$560.45; 1667 to 1672 domestic, \$562.45; 1673 to 1678 domestic, \$564.45; 1679 to 1684 domestic, \$566.45; 1685 to 1690 domestic, \$568.45; 1691 to 1696 domestic, \$570.45; 1697 to 1702 domestic, \$572.45; 1703 to 1708 domestic, \$574.45; 1709 to 1714 domestic, \$576.45; 1715 to 1720 domestic, \$578.45; 1721 to 1726 domestic, \$580.45; 1727 to 1732 domestic, \$582.45; 1733 to 1738 domestic, \$584.45; 1739 to 1744 domestic, \$586.45; 1745 to 1750 domestic, \$588.45; 1751 to 1756 domestic, \$590.45; 1757 to 1762 domestic, \$592.45; 1763 to 1768 domestic, \$594.45; 1769 to 1774 domestic, \$596.45; 1775 to 1780 domestic, \$598.45; 1781 to 1786 domestic, \$600.45; 1787 to 1792 domestic, \$602.45; 1793 to 1798 domestic, \$604.45; 1799 to 1804 domestic, \$606.45; 1805 to 1810 domestic, \$608.45; 1811 to 1816 domestic, \$610.45; 1817 to 1822 domestic, \$612.45; 1823 to 1828 domestic, \$614.45; 1829 to 1834 domestic, \$616.45; 1835 to 1840 domestic, \$618.45; 1841 to 1846 domestic, \$620.45; 1847 to 1852 domestic, \$622.45; 1853 to 1858 domestic, \$624.45; 1859 to 1864 domestic, \$626.45; 1865 to 1870 domestic, \$628.45; 1871 to 1876 domestic, \$630.45; 1877 to 1882 domestic, \$632.45; 1883 to 1888 domestic, \$634.45; 1889 to 1894 domestic, \$636.45; 1895 to 1900 domestic, \$638.45; 1901 to 1906 domestic, \$640.45; 1907 to 1912 domestic, \$642.45; 1913 to 1918 domestic, \$644.45; 1919 to 1924 domestic, \$646.45; 1925 to 1930 domestic, \$648.45; 1931 to 1936 domestic, \$650.45; 1937 to 1942 domestic, \$652.45; 1943 to 1948 domestic, \$654.45; 1949 to 1954 domestic, \$656.45; 1955 to 1960 domestic, \$658.45; 1961 to 1966 domestic, \$660.45; 1967 to 1972 domestic, \$662.45; 1973 to 1978 domestic, \$664.45; 1979 to 1984 domestic, \$666.45; 1985 to 1990 domestic, \$668.45; 1991 to 1996 domestic, \$670.45; 1997 to 2000 domestic, \$672.45; 2001 to 2006 domestic, \$674.45; 2007 to 2012 domestic, \$676.45; 2013 to 2018 domestic, \$678.45; 2019 to 2024 domestic, \$680.45; 2025 to 2030 domestic, \$682.45; 2031 to 2036 domestic, \$684.45; 2037 to 2042 domestic, \$686.45; 2043 to 2048 domestic, \$688.45; 2049 to 2054 domestic, \$690.45; 2055 to 2060 domestic, \$692.45; 2061 to 2066 domestic, \$694.45; 2067 to 2072 domestic, \$696.45; 2073 to 2078 domestic, \$698.45; 2079 to 2084 domestic, \$700.45; 2085 to 2090 domestic, \$702.45; 2091 to 2096 domestic, \$704.45; 2097 to 2102 domestic, \$706.45; 2103 to 2108 domestic, \$708.45; 2109 to 2114 domestic, \$710.45; 2115 to 2120 domestic, \$712.45; 2121 to 2126 domestic, \$714.45; 2127 to 2132 domestic, \$716.45; 2133 to 2138 domestic, \$718.45; 2139 to 2144 domestic, \$720.45; 2145 to 2150 domestic, \$722.45; 2151 to 2156 domestic, \$724.45; 2157 to 2162 domestic, \$726.45; 2163 to 2168 domestic, \$728.45; 2169 to 2174 domestic, \$730.45; 2175 to 2180 domestic, \$732.45; 2181 to 2186 domestic, \$734.45; 2187 to 2192 domestic, \$736.45; 2193 to 2198 domestic, \$738.45; 2199 to 2204 domestic, \$740.45; 2205 to 2210 domestic, \$742.45; 2211 to 2216 domestic, \$744.45; 2217 to 2222 domestic, \$746.45; 2223 to 2228 domestic, \$748.45; 2229 to 2234 domestic, \$750.45; 2235 to 2240 domestic, \$752.45; 2241 to 2246 domestic, \$754.45; 2247 to 2252 domestic, \$756.45; 2253 to 2258 domestic, \$758.45; 2259 to 2264 domestic, \$760.45; 2265 to 2270 domestic, \$762.45; 2271 to 2276 domestic, \$764.45; 2277 to 2282 domestic, \$766.45; 2283 to 2288 domestic, \$768.45; 2289 to 2294 domestic, \$770.45; 2295 to 2300 domestic, \$772.45; 2301 to 2306 domestic, \$774.45; 2307 to 2312 domestic, \$776.45; 2313 to 2318 domestic, \$778.45; 2319 to 2324 domestic, \$780.45; 2325 to 2330 domestic, \$782.45; 2331 to 2336 domestic, \$784.45; 2337 to 2342 domestic, \$786.45; 2343 to 2348 domestic, \$788.45; 2349 to 2354 domestic, \$790.45; 2355 to 2360 domestic, \$792.45; 2361 to 2366 domestic, \$794.45; 2367 to 2372 domestic, \$796.45; 2373 to 2378 domestic, \$798.45; 2379 to 2384 domestic, \$800.45; 2385 to 2390 domestic, \$802.45; 2391 to 2396 domestic, \$804.45; 2397 to 2402 domestic, \$806.45; 2403 to 2408 domestic, \$808.45; 2409 to 2414 domestic, \$810.45; 2415 to 2420 domestic, \$812.45; 2421 to 2426 domestic, \$814.45; 2427 to 2432 domestic, \$816.45; 2433 to 2438 domestic, \$818.45; 2439 to 2444 domestic, \$820.45; 2445 to 2450 domestic, \$822.45; 2451 to 2456 domestic, \$824.45; 2457 to 2462 domestic, \$826.45; 2463 to 2468 domestic, \$828.45; 2469 to 2474 domestic, \$830.45; 2475 to 2480 domestic, \$832.45; 2481 to 2486 domestic, \$834.45; 2487 to 2492 domestic, \$836.45; 2493 to 2498 domestic, \$838.45; 2499 to 2504 domestic, \$840.45; 2505 to 2510 domestic, \$842.45; 2511 to 2516 domestic, \$844.45; 2517 to 2522 domestic, \$846.45; 2523 to 2528 domestic, \$848.45; 2529 to 2534 domestic, \$850.45; 2535 to 2540 domestic, \$852.45; 2541 to 2546 domestic, \$854.45; 2547 to 2552 domestic, \$856.45; 2553 to 2558 domestic, \$858.45; 2559 to 2564 domestic, \$860.45; 2565 to 2570 domestic, \$862.45; 2571 to 2576 domestic, \$864.45; 2577 to 2582 domestic, \$866.45; 2583 to 2588 domestic, \$868.45; 2589 to 2594 domestic, \$870.45; 2595 to 2600 domestic, \$872.45; 2601 to 2606 domestic, \$874.45; 2607 to 2612 domestic, \$876.45; 2613 to 2618 domestic, \$878.45; 2619 to 2624 domestic, \$880.45; 2625 to 2630 domestic, \$882.45; 2631 to 2636 domestic, \$884.45; 2637 to 2642 domestic, \$886.45; 2643 to 2648 domestic, \$888.45; 2649 to 2654 domestic, \$890.45; 2655 to 2660 domestic, \$892.45; 2661 to 2666 domestic, \$894.45; 2667 to 2672 domestic, \$896.45; 2673 to 2678 domestic, \$898.45; 2679 to 2684 domestic, \$900.45; 2685 to 2690 domestic, \$902.45; 2691 to 2696 domestic, \$904.45; 2697 to 2702 domestic, \$906.45; 2703 to 2708 domestic, \$908.45; 2709 to 2714 domestic, \$910.45; 2715 to 2720 domestic, \$912.45; 2721 to 2726 domestic, \$914.45; 2727 to 2732 domestic, \$916.45; 2733 to 2738 domestic, \$918.45; 2739 to 2744 domestic, \$920.45; 2745 to 2750 domestic, \$922.45; 2751 to 2756 domestic, \$924.45; 2757 to 2762 domestic, \$926.45; 2763 to 2768 domestic, \$928.45; 2769 to 2774 domestic, \$930.45; 2775 to 2780 domestic, \$932.45; 2781 to 2786 domestic, \$934.45; 2787 to 2792 domestic, \$936.45; 2793 to 2798 domestic, \$938.45; 2799 to 2804 domestic, \$940.45; 2805 to 2810 domestic, \$942.45; 2811 to 2816 domestic, \$944.45; 2817 to 2822 domestic, \$946.45; 2823 to 2828 domestic, \$948.45; 2829 to 2834 domestic, \$950.45; 2835 to 2840 domestic, \$952.45; 2841 to 2846 domestic, \$954.45; 2847 to 2852 domestic, \$956.45; 2853 to 2858 domestic, \$958.45; 2859 to 2864 domestic, \$960.45; 2865 to 2870 domestic, \$962.45; 2871 to 2876 domestic, \$964.45; 2877 to 2882 domestic, \$966.45; 2883 to 2888 domestic, \$968.45; 2889 to 2894 domestic, \$970.45; 2895 to 2900 domestic, \$972.45; 2901 to 2906 domestic, \$974.45; 2907 to 2912 domestic, \$976.45; 2913 to 2918 domestic, \$978.45; 2919 to 2924 domestic, \$980.45; 2925 to 2930 domestic, \$982.45; 2931 to 2936 domestic, \$984.45; 2937 to 2942 domestic, \$986.45; 2943 to 2948 domestic, \$988.45; 2949 to 2954 domestic, \$990.45; 2955 to 2960 domestic, \$992.45; 2961 to 2966 domestic, \$994.45; 2967 to 2972 domestic, \$996.45; 2973 to 2978 domestic, \$998.45; 2979 to 2984 domestic, \$1000.45; 2985 to 2990 domestic, \$1002.45; 2991 to 2996 domestic, \$1004.45; 2997 to 3000 domestic, \$1006.45; 3001 to 3006 domestic, \$1008.45; 3007 to 3012 domestic, \$1010.45; 3013 to 3018 domestic, \$1012.45; 3019 to 3024 domestic, \$1014.45; 3025 to 3030 domestic, \$1016.45; 3031 to 3036 domestic, \$1018.45; 3037 to 3042 domestic, \$1020.45; 3043 to 3048 domestic, \$1022.45; 3049 to 3054 domestic, \$1024.45; 3055 to 3060 domestic, \$1026.45; 3061 to 3066 domestic, \$1028.45; 3067 to 3072 domestic, \$1030.45; 3073 to 3078 domestic, \$1032.45; 3079 to 3084 domestic, \$1034.45; 3085 to 3090 domestic, \$1036.45; 3091 to 3096 domestic, \$1038.45; 3097 to 3102 domestic, \$1040.45; 3103 to 3108 domestic, \$1042.45; 3109 to 3114 domestic, \$1044.45; 3115 to 3120 domestic, \$1046.45; 3121 to 3126 domestic, \$1048.45; 3127 to 3132 domestic, \$1050.45; 3133 to 3138 domestic, \$1052.45; 3139 to 3144 domestic, \$1054.45; 3145 to 3150 domestic, \$1056.45; 3151 to 3156 domestic, \$1058.45; 3157 to 3162 domestic, \$1060.45; 3163 to 3168 domestic, \$1062.45; 3169 to 3174 domestic, \$1064.45; 3175 to 3180 domestic, \$1066.45; 3181 to 3186 domestic, \$1068.45; 3187 to 3192 domestic, \$1070.45; 3193 to 3198 domestic, \$1072.45; 3199 to 3204 domestic, \$1074.45; 3205 to 3210 domestic, \$1076.45; 3211 to 3216 domestic, \$1078.45; 3217 to 3222 domestic, \$1080.45; 3223 to 3228 domestic, \$1082.45; 3229 to 3234 domestic, \$1084.45; 3235 to 3240 domestic, \$1086.45; 3241 to 3246 domestic, \$1088.45; 3247 to 3252 domestic, \$1090.45; 3253 to 3258 domestic, \$1092.45; 3259 to 3264 domestic, \$1094.45; 3265 to 3270 domestic, \$1096.45; 3271 to 3276 domestic, \$1098.45; 3277 to 3282 domestic, \$1100.45; 3283 to 3288 domestic, \$1102.45; 3289 to 3294 domestic, \$1104.45; 3295 to 3300 domestic, \$1106.45; 3301 to 3306 domestic, \$1108.45; 3307 to 3312 domestic, \$1110.45; 3313 to 3318 domestic, \$1112.45; 3319 to 3324 domestic, \$1114.45; 3325 to 3330 domestic, \$1116.45; 3331 to 3336 domestic, \$1118.45; 3337 to 3342 domestic, \$1120.45; 3343 to 3348 domestic, \$1122.45; 3349 to 3354 domestic, \$1124.45; 3355 to 3360 domestic, \$1126.45; 3361 to 3366 domestic, \$1128.45; 3367 to 3372 domestic, \$1130.45; 3373 to 3378 domestic, \$1132.45; 3379 to 3384 domestic, \$1134.45; 3385 to 3390 domestic, \$1136.45; 3391 to 3396 domestic, \$1138.45; 3397 to 3402 domestic, \$1140.45; 3403 to 3408 domestic, \$1142.45; 3409 to 3414 domestic, \$1144.45; 3415 to 3420 domestic, \$1146.45; 3421 to 3426 domestic, \$1148.45; 3427 to 3432 domestic, \$1150.45; 3433 to 3438 domestic, \$1152.45; 3439 to 3444 domestic, \$1154.45; 3445 to 3450 domestic, \$1156.45; 3451 to 3456 domestic, \$1158.45; 3457 to 3462 domestic, \$1160.45; 3463 to 3468 domestic, \$1162.45; 3469 to 3474 domestic, \$1164.45; 3475 to 3480 domestic, \$1166.45; 3481 to 3486 domestic, \$1168.45; 3487 to 3492 domestic, \$1170.45; 3493 to 3498 domestic, \$1172.45; 3499 to 3504 domestic, \$1174.45; 3505 to 3510 domestic, \$1176.45; 3511 to 3516 domestic, \$1178.45; 3517 to 3522 domestic, \$1180.45; 3523 to 3528 domestic, \$1182.45; 3529 to 3534 domestic, \$1184.45; 3535 to 3540 domestic, \$1186.45; 3541 to 3546 domestic, \$1188.45; 3547 to 3552 domestic, \$1190.45; 3553 to 3558 domestic, \$1192.45; 3559 to 3564 domestic, \$1194.45; 3565 to 3570 domestic, \$1196.45; 3571 to 3576 domestic, \$1198.45; 3577 to 3582 domestic, \$1200.45; 3583 to 3588 domestic, \$1202.45; 3589 to 3594 domestic, \$1204.45; 3595 to 3600 domestic,



"IT'S ONLY MONEY" you save at Shop-Rite!

See Jerry Lewis in the Richest Roar-Riot in Years! with Joan O'Brien, Zachary Scott, Jack Weston, Jessie White, and Mae Questel. "It's Only Money" starts convulsing audiences in Northern Jersey WEDNESDAY, NOVEMBER 21st. — Fabian, Paterson; Stanley, Jersey City; Montauk, Passaic; Oritani, Hackensack; Baker, Dover; and coming soon to other Stanley Warner Theatres in New Jersey.



PLANNING A BIG THANKSGIVING? Fine! So are we! We're planning to bring you a traditional Shop-Rite Turkey, the kind of turkey that makes Thanksgiving the greatest family occasion of the year... Just wait till you try a SHOP-RITE Turkey! Broad breasted, bred for more and more tender white meat... packed ready to pop into the oven with giblets included for that traditional holiday gravy... legs tucked away and ready for the roasting pan... the majority of the leg tendons removed to make these drumsticks a new kind of delicacy!

TURKEYS

TOMS
18-24 lbs.

32^c
lb.

HENS
10-17 lbs.

38^c
lb.

Shop-Rite Brand
GRADE "A"
OVEN-READY

FRESH FROM SHOP-RITE!

CRANBERRIES

OCEAN SPRAY FRESH lb. box 19^c

Golden Sweet Potatoes lb. 5^c

Indian River Seedless Grapefruit 10 for 49^c

Yellow Globe Onions 3 lb. 19^c

Canadian Waxed Turnips lb. 5^c

Fancy Eating Crisp Apples 3 lb. 29^c

Chuck Steaks Well Trimmed 49^c lb.

Lean, Fresh Ground Beef lb. 49^c
California Roast lb. 69^c
Boneless Chuck Pot Roast lb. 79^c

Armour Star SAUSAGE MEAT 29^c lb.

Cube Steaks All Meat 89^c lb.

Tender, Well Trimmed Shoulder Steaks lb. 99^c
Under 10 lbs. Small Turkeys lb. 45^c
For Broiling Beef Short Ribs lb. 49^c

Tender RIB STEAKS 79^c

SHOP-RITE'S THANKFUL SAVINGS ON GROCERIES!

Ajax or Comet 3.0H 14-oz. 12^c can

Applesauce Shop-Rite 8 #303 31^c cans

Tomatoes Buitoni, Pope, DeGazio or Progress Imported Italian 4 35-oz. 31^c cans

Yams Shop-Rite In Syrup 5 16-oz. 31^c cans

Soup Campbell's Chicken Noodle or Chicken Rice 3 10 1/2-oz. 46^c cans

Beverages Shop-Rite All Flavors 8 28-oz. 31^c bottle

Mayonnaise Shop-Rite quart 39^c

Miracle Whip Kraft Salad Dressing 32-oz. 49^c jar

Thrivo Dog Food Free personalized stationery offer with Thrivo label 16-oz. 10^c can

MINUTE RICE 14-oz. 39^c box

SAVE ON FROZEN FOODS! SHOP-RITE FROZEN GRAPE or ORANGE JUICE

6 6-oz. 75^c cans

Minute Maid, Libby, Birds Eye Orange Juice 5 6-oz. 79^c cans

Save Additional 10c with Coupon in McCall's, Ladies Home Journal, Look

Shop-Rite Cut Corn 7 7-1/2 31^c cans

Shop-Rite Broccoli Spear 19c Green Beans 19c

Shop-Rite Italian Beans 19c Green Fries 19c

Shop-Rite Carrots 6 89c Spears 39c

Shop-Rite Farm House Pies PUMPKIN Apple or Blueberry 2 89c

SAVE ON DAIRY!

Shop-Rite Brick Butter lb. 63^c

Shop-Rite Biscuits 6c Citrus Salad 49^c

Shop-Rite Cheese New York Cheddar 59c Topping 37c

Shop-Rite Cheese Kraft American Whipped Cheddar 23c Party Snacks 21c

Homogenized Fresh Milk 44c gallon 87c plus dep.

SAVE ON DELI!

Shop-Rite Sliced Bacon lb. 49^c

UNOX IMPORTED CANNED HAM 1 lb. 99c 2 lb. 1⁹⁹

3 lb. 2⁹⁹ 5 lb. 4⁹⁹

Hormel Canned Ham 9 1/2-lb. 69^c

SAVE ON BAKERY!

Shop-Rite Fresh Baked, Ready to Eat, Just Slice & Serve Pumpkin Pie 16-oz. 49^c

Nature's Choice Mallowmors 3c Assortment 3 1⁹⁹

Shop-Rite Cheese-It 4 1⁹⁹ Potato Chips 49^c

Shop-Rite Tomato Juice 5 31^c

Instant Chock Full O' Nuts 77^c

Motts or Shop-Rite Apple Juice 4 89^c

Dal Monte or Starkist Tuna Light Chunk 4 31^c

Instant Maxwell House 1²⁹

Dad's Root Beer 5 31^c

Motts AM & PM Drinks 3 93^c

Lady Tab or Miss Georgia Peaches FREESTONE 4 93^c

Shop-Rite in Brine Corn WHOLE KERNEL 2 29^c

Starkist Solid Pk. White Tuna 3 31^c

Dal Monte, Hunt, Progress, Shop-Rite Tomato Sauce 10 89^c

Shop-Rite Sweet Potatoes 4 31^c

Dal Monte or Green Giant Sweet Peas 5 31^c

COFFEE SALE

4c OFF! Reg. Drip Fine CHASE & SANBORN 59^c lb. can

Martinsons Red or Blue 79^c lb. can

Holland House 4c OFF 55^c lb. can

Savarin Reg. Drip or Sile 63^c lb. can

Maxwell House Reg. Drip 63^c lb. can

Chock Full O' Nuts 69^c lb. can

Yuban, Sanka 69^c lb. can

Maxwell 2 31⁹⁹ Shop-Rite 49^c

Shop-Rite 2 89^c Shop-Rite 39^c

Shop-Rite Creamy/Chunky Peanut Butter 3 99^c

Franco American Chicken Gravy Beef or Mushroom 2 34^c

Shop-Rite Evap. Milk 8 31^c

Delicious V-8 Juice 36^c

Instant Coffee Maxwell House 79^c

Shop-Rite Soap Filled Pads 5 31^c

Shop-Rite Walnuts 45^c

Shop-Rite Fruit Cocktail 3 31^c

Shop-Rite Solid Pack in Oil White Tuna 3 89^c

Dark or Lite Brown or 4X Confectionary Sugar 2 31^c

Baker Assorted Pastry Fillings 3 89^c

Convenient Mazola Oil 1⁹⁹

Betty Crocker — 6c OFF Brownie Mix 3 31^c

TOMATO

CATSUP

Shop-Rite, Sniders Stokely, Pride of the Farm

6 14-oz. 1⁹⁹ 20-oz. 1⁹⁹

SHOP-RITE DRY

SOUPS

Chicken Rice, Mushroom, Onion 2 pk. 25^c

Shop-Rite Chicken Noodle 2 pk. 19^c

SHOP-RITE

GRAPE JELLY

4 lb. 77^c 2 lb. 43^c

24-oz. jar 29^c 12-oz. jar 6 for 1⁹⁹ 18-oz. tumbler 29^c

Prices effective through Saturday Night, November 24, 1962. Not responsible for typographical errors. We reserve the right to limit quantities.

TRAILER TRUCKS

SHOP-RITE TOY 3⁹⁹

FREE PARKING

DELIVERY SERVICE

ROYAL SHOP-RITE

169 WASHINGTON AVE., BELLEVILLE

STORE HOURS:

Sunday Closed, Mon. 9-9

Tues. 9-9, Wed. 9-6

Thur. 9-9, Friday 9-10

Saturday 8-6